



Finished Design Size: 4.25" x 4.25"

Working Instructions: Fold the fabric in half and measure down 2" to begin the first satin stitch block using size #5, see arrow. Work all the satin stitch blocks and continue with solid motifs, using size #5. Use size #8 for cable stitch, and continue with cutting, woven bars, center web and large outer web using size #8. Use Professional Touch Rhinestone Applicator (item 8200) to apply not-fix crystals to the design.

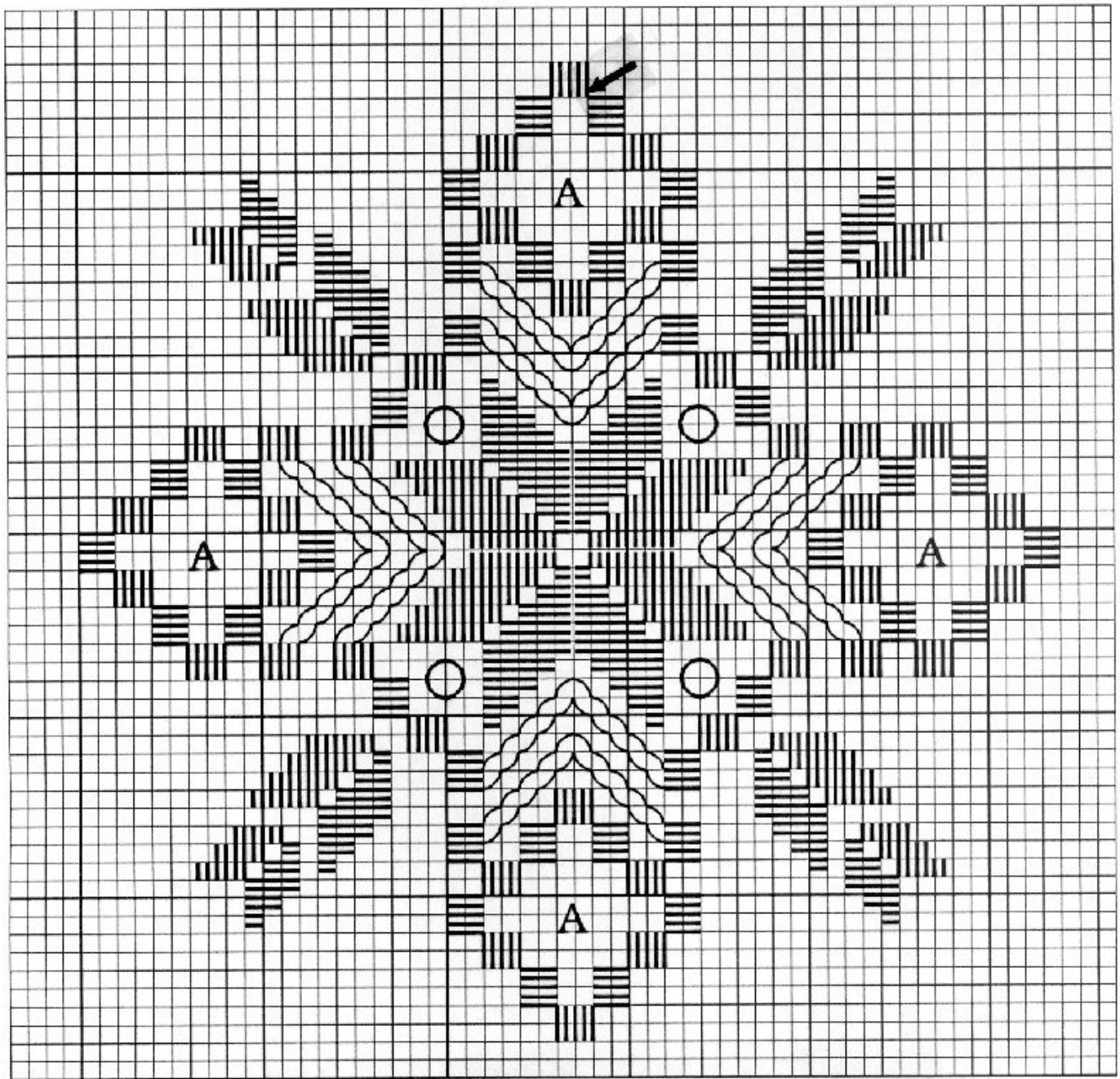
Materials:

3990-100

8222

DD005-076

DD008-076



A - Woven bars with center web and large outer web.  
Every square of the chart represents  
2 X 2 fabric threads.