



Finished Design Size: 2.25" x 7.25" (design is 1.5" x 5")

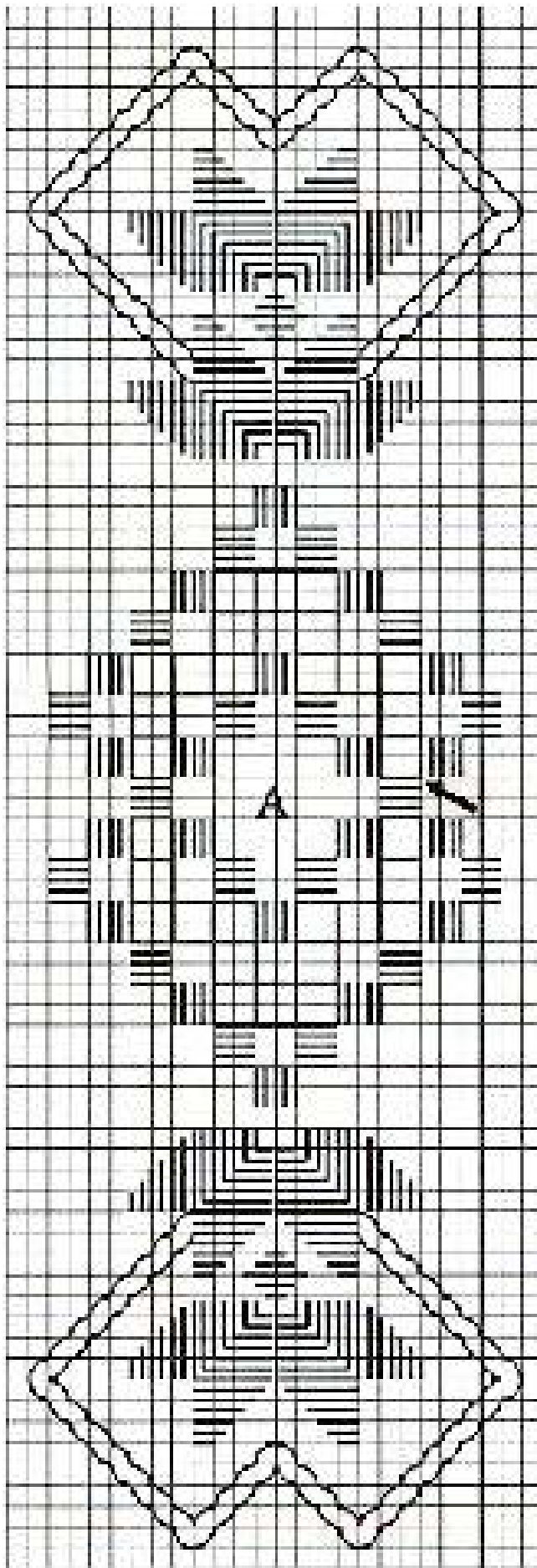
Working Instructions: Fold the linen bands in half lengthwise to find the center. There are 56 fabric threads in the width. Count 28 threads to the center of the bands. From this center point of the bands, count 10 threads to the right and 2 threads up to begin the first satin stitch block (see arrow). Work all the satin stitch blocks, box stitch, solid motifs and cable stitch. Continue with cutting weaving and center web.

Machine or hand stitch a row across each end, .5" out from the design. Fringe the fabric up to this stitched line.

Materials:

Band - 30 count ct. Linen - White (2" wide)

ThreadworX Pearl #8 - Calypso Bulbosa



A - Woven bars
with center web

Every square of
the chart
represents 2 x 2
threads of fabric.