



Finished Design Size: 4.8" x 4.8"

Working Instructions: From the top right corner of the fabric, measure 4" to the left and 4" down to begin the first satin stitch block (see arrow), using size #5. Work all the satin stitch blocks and outer row of solid motifs and center solid motif, using size #5 for all of these stitches.

Use size #8 for large partial eyelets in the border, adjoining wrap, cable stitch, lazy daisy stitch and box hemstitch. Attach Mill Hill Treasure in the center space, using a Mill Hill bead in the center to keep it in place. Frame in a 6" frame.

Change colors for both fabric and thread and you'll be amazed with the difference. Stitching four of these designs in a large square shape, using four complimentary colors would be perfect for a framed piece or pillow. Changing the filling stitches will add to the interest as well. Be Creative!

**Materials:**

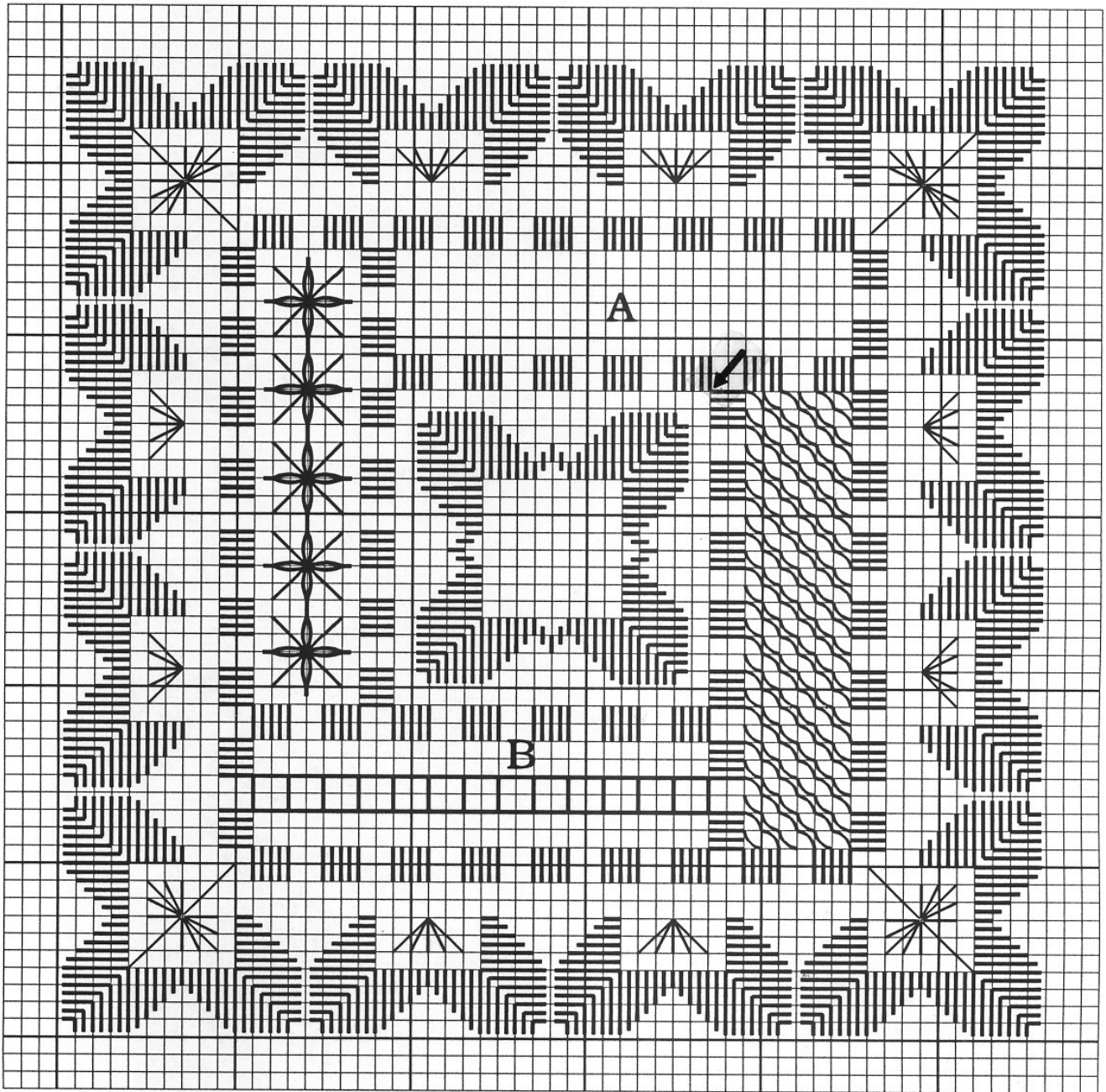
Leah's #8 - Wisteria

Hardanger fabric - 22 count ct. Pale Pink (58" wide)

Mill Hill Glass Treasure-5 Petal Flower/Matte Amethyst 12007

Leah's #5 - Wisteria

Mill Hill Beads-Heather Mauve 500/Pkg



A - Adjoining wrap

B - Cut and remove both rows of 4 horizontal threads before stitching the box stitch in the center.

Every square of the chart represents 4 x 4 fabric threads.