



Finished Design Size: 2.5" x 4"

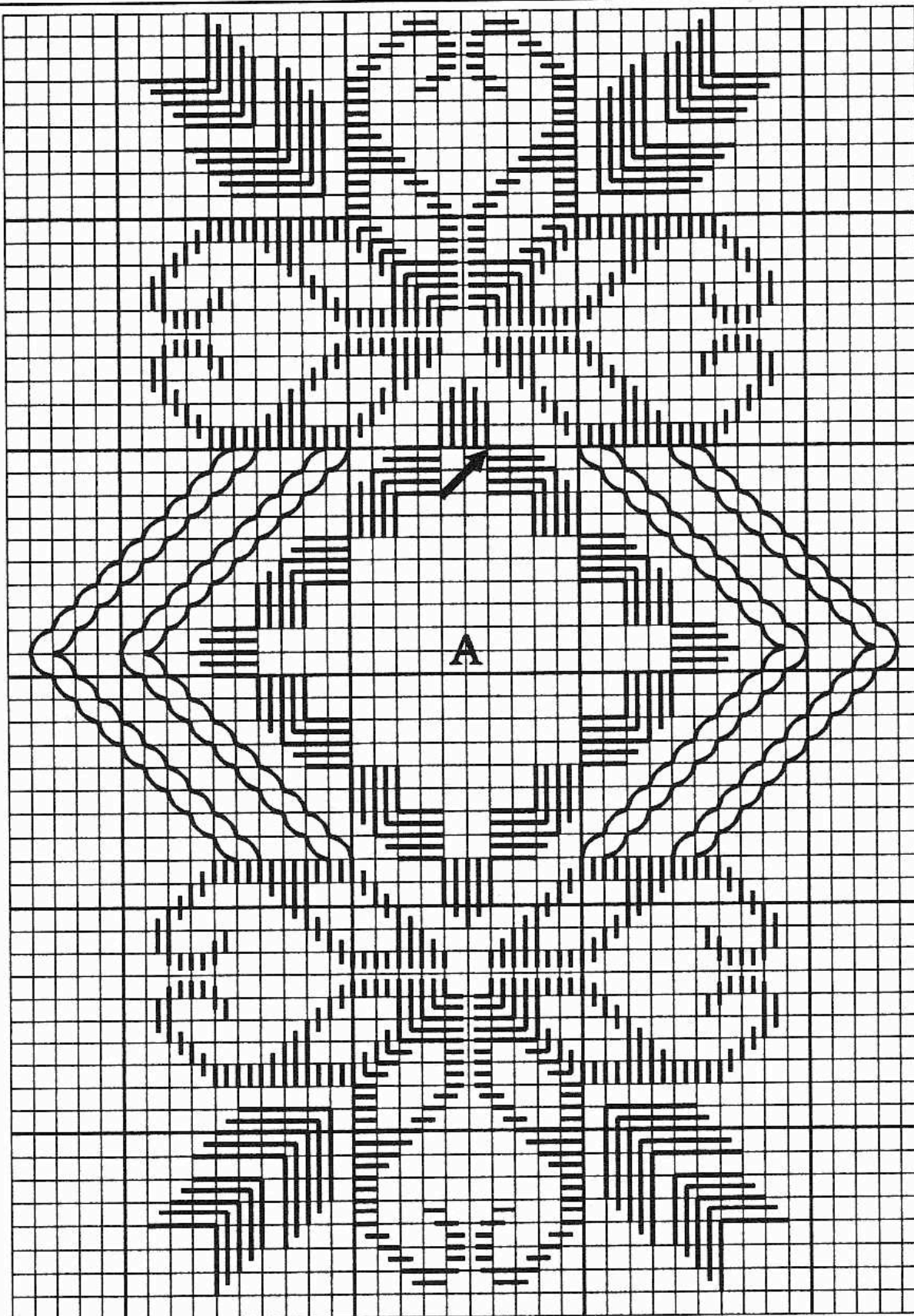
Working Instructions: Fold the fabric in half lengthwise to find the center line. Measure down 2.88" to begin the first satin stitch block (see arrow on chart). Work all the satin stitch blocks, solid motifs, cable stitch, woven bars, web and triangular webs.

Finishing Instructions: After the stitching is completed, trim the fabric to 4.75" x 6.75", trimming the appropriate sides so the design is centered on the fabric. Cut a piece of lining fabric 4" x 5.75". Cut a piece of heavy-duty fusible interfacing 4.75" x 6.75". Iron the needlework face down on a terry towel. With the needlework lying face down, center the piece of lining fabric on the needlework. Lay the fusible interfacing with the shiny side down on the other two fabrics. Iron as directed on the fusible interfacing packaging, paying special attention to the edges where the fusible interfacing bonds to the needlework fabric. This will add body to the needlework, making it easier to mount in the card. Use double-sided tape to mount the needlework in the card and to attach the right flap of the card to the back of the needlework.

Stitch this beautiful greeting card in either variegated Wildflowers, or with cream on cream. This is just one of eighteen card designs in book #0223, Greetings in Hardanger Embroidery.

Materials:

Cashel 28 count ct. linen - Cream
Rosemaled Card - Oval Opening (3)
Wildflowers-Teak



A - Woven bars, web and triangular webs
 Every square of the chart represents
 2 x 2 threads of fabric