

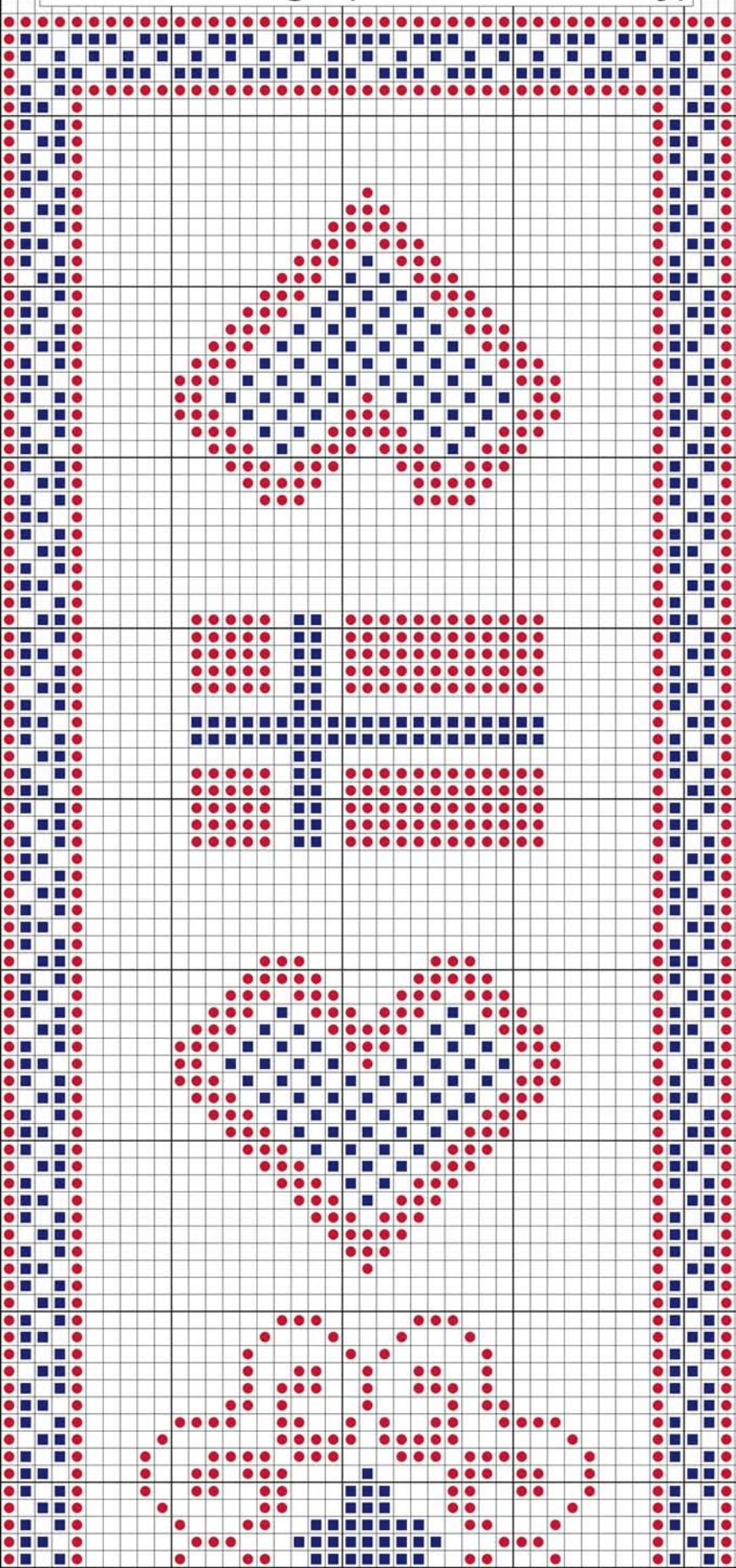
Elskede Norge (Beloved Norway)

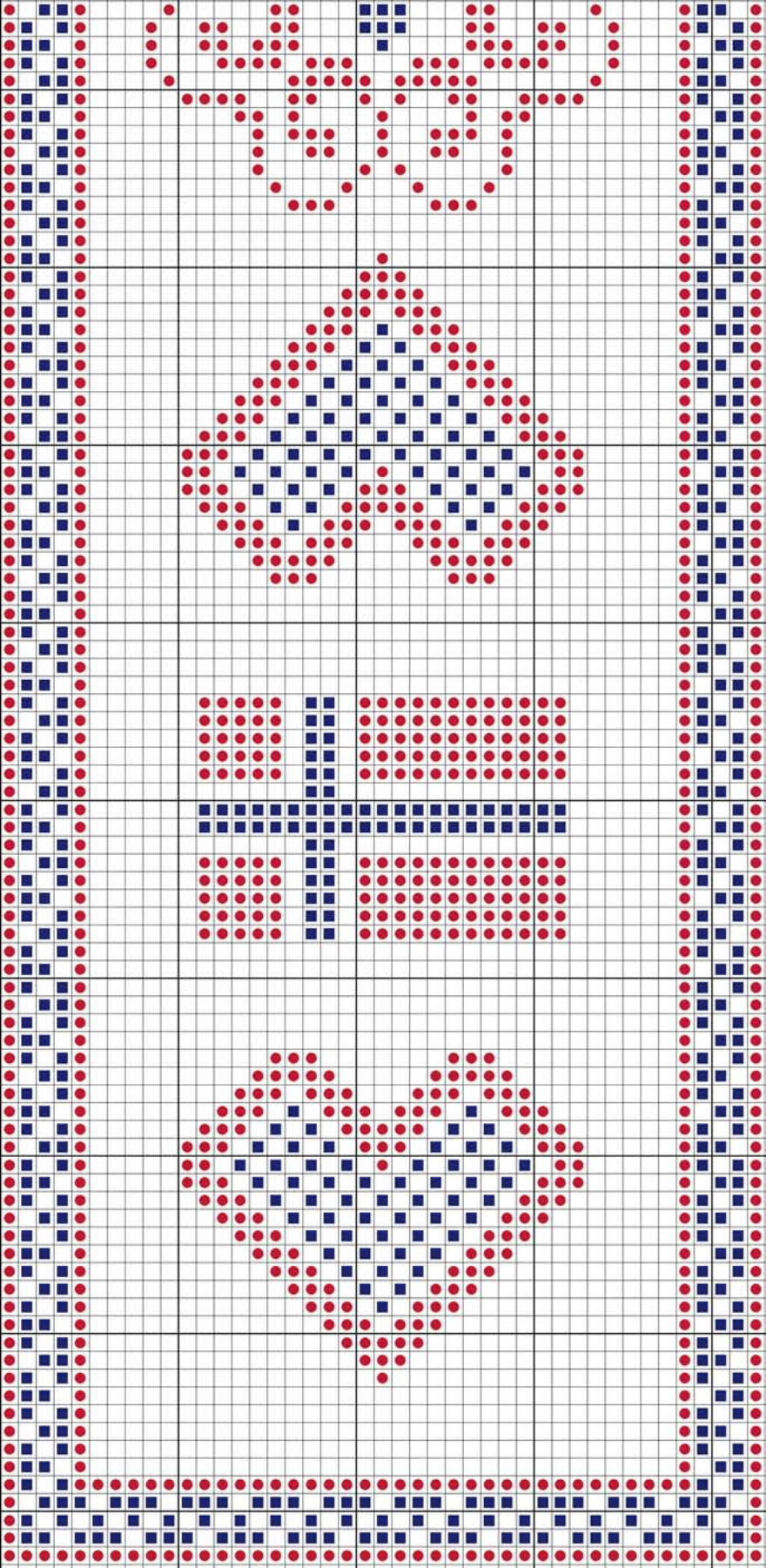


You can stitch the design on 13-count canvas with either the Gobelin or double cross stitch. You would need to stitch the open areas in white to cover up the canvas.

©2011 Designed by Debi Feyh for Nordic Needle, Inc.

Elskede Norge (Beloved Norway)





DMC PC 5 - #820

DMC PC 5 - #817

One block equals one stitch

©2011 Designed by Debi Feyh for Nordic Needle, Inc.