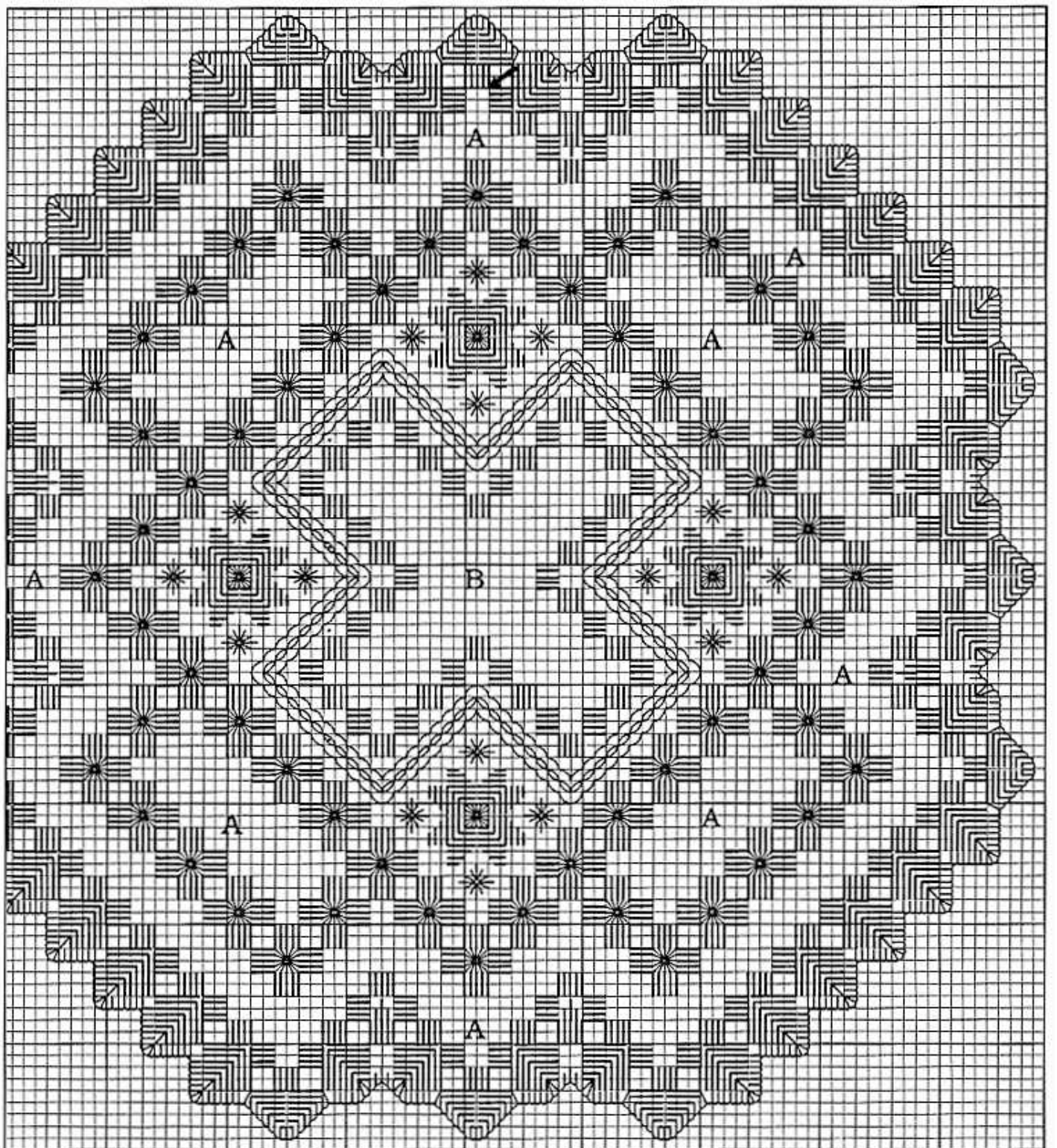


Finished Design Size: 8.5" round

Working Instructions: Fold the fabric in half to find the center line. Measure down 1.5" to begin the first satin stitch block (see arrow on chart) using size #5. Work all the satin stitches, star motifs and wedge-shaped satin stitch motifs in the border using size #5. Use size #8 for the tailored buttonhole edge over two fabric threads. Use size #12 for eyelets, cable stitch, woven bars, picots and webs.

For more complete instructions on the basics of this fascinating needlework, order Beginner's Charted Hardanger Embroidery (item #0105) or Advanced Charted Hardanger Embroidery (item #0106).



A - Woven bars and picots.
B - Woven bars, picots and webs
Every square of the chart represents
2 x 2 threads of fabric.