



Finished Design Size: 4.38" x 4.38"

Working Instructions: Fold the fabric in half to find the center line. Measure down 3" to begin the first satin stitch block (see arrow), using color #899 cream. Work all the satin stitch blocks and their corner extensions using this color. All other stitches worked with #900, dark cream color. Continue with the solid motifs, cable stitch, cutting woven bars, triangular and regular webs. Attach beads and heart Treasure. Press the piece, right side down on a terry towel. It is now ready to be finished into a frame, quilt square, pillow top or box lid.

Materials:

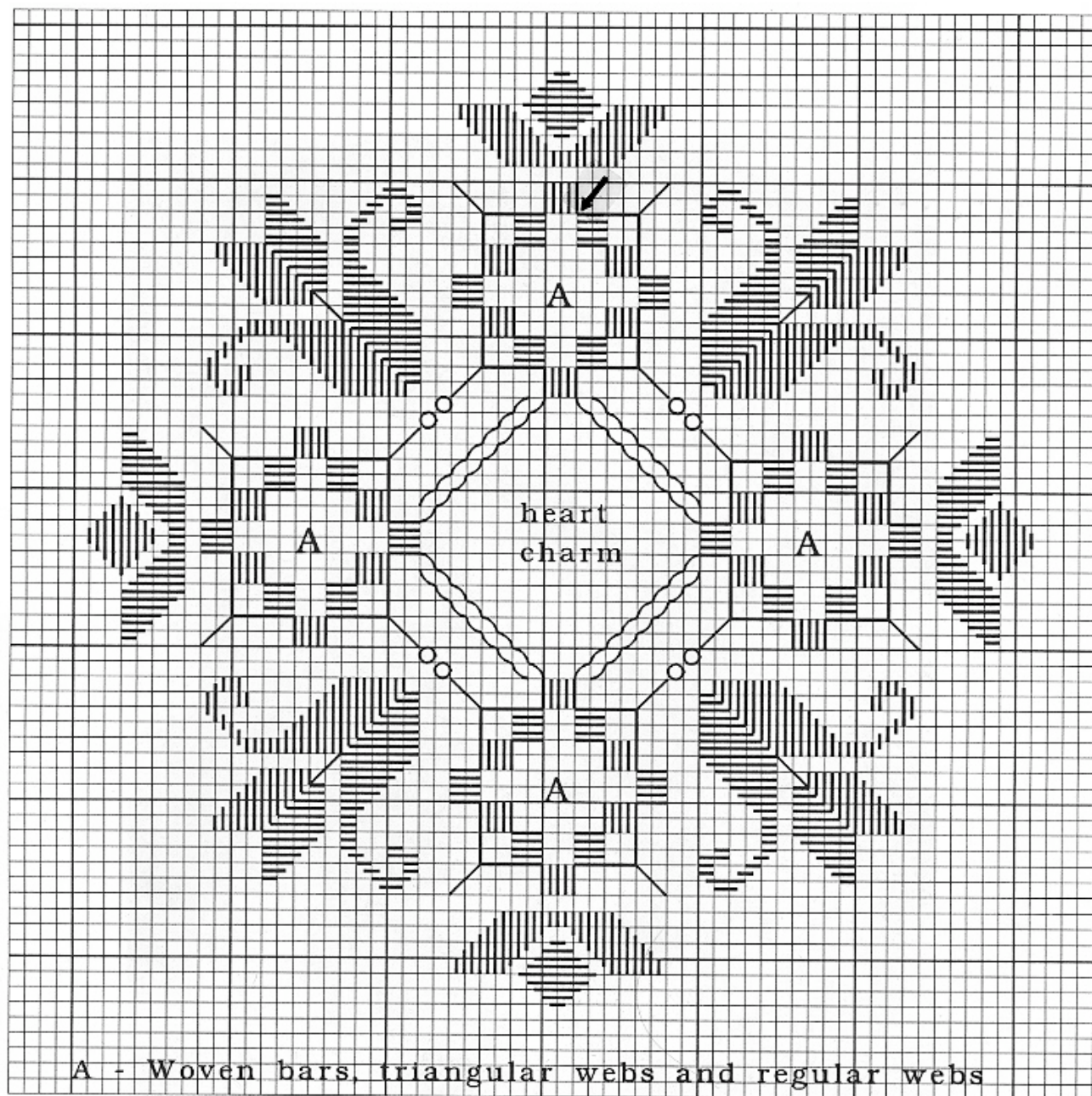
RGELE-E899

RGELE-E900

3270-264 or 3281-222

623-542-2066

MH0123



A - Woven bars, triangular webs and regular webs
Every square of the chart represents 2 x 2 threads
of fabric.