



Finished Design Size: 4.25" x 4.25"

Working Instructions: From the top right corner of the fabric, measure 2 1/2" to the left and 2 1/2" down to begin the first satin stitch motif, using the cream #8 pearl cotton. You will begin at the top right inside corner of this "A" motif. (see arrow).

Work this motif and then use your accent color to stitch the hearts and little corner motifs. Follow the chart carefully to get the correct length of your stitches. When one corner is complete, stitch the connecting heart motif. After this is complete, switch back to the cream pearl cotton and stitch the cream motif. Continue in this manner until all four corners have been stitched.

In each corner motif, cut the middle four fabric threads on all four sides. In other words, from each corner, leave four fabric threads, cut four fabric threads, and leave four fabric threads. After all four sides have been cut, pull them out and you will have the four bars to weave. On the 4th bar, weave half-way across and then insert the web before weaving the final half of the fourth bar.

Finally, choose the sentiment you wish for the center and backstitch it in.

Materials:

Lugana 25 count ct. - Cream

Anchor Pearl Cotton Size #8 - Cream

Anchor Pearl Cotton Size #8 - Antique Mauve Medium

Valentine Greeting – Framed

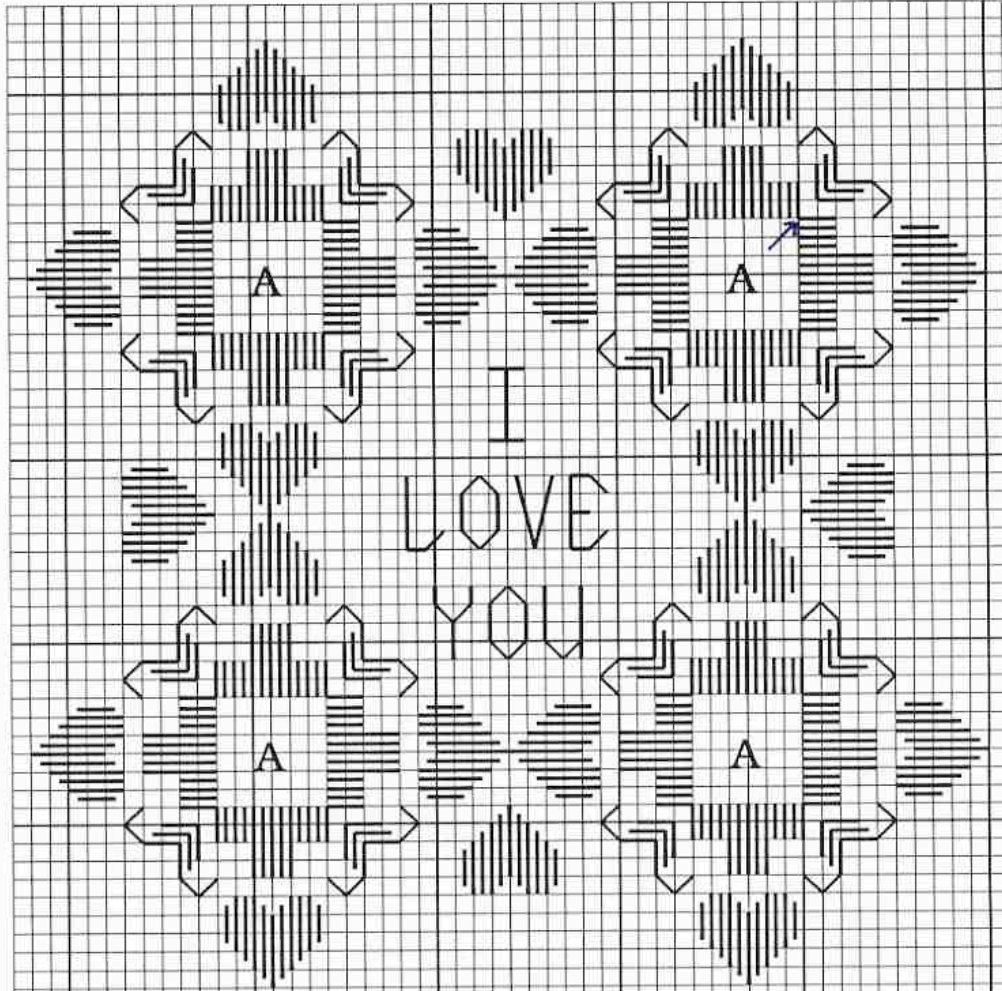
Designed by Roz Watnemo

Copyright 2003

Nordic Needle, Inc, 1314 Gateway Drive, Fargo, ND 58103

800-433-4321

website: www.nordicneedle.com



A - Woven bars and web.

Every square of the chart represents
2 x 2 threads of fabric.

BE SWEET I'M
MINE HEART YOURS