



Finished Design Size: 4" x 4"

Working Instructions: Fold the fabric both ways to find the center point. From this center point, count two threads to the right and 18 fabric threads up to begin the first satin stitch block (see arrow). Work all the satin stitch blocks and continue with solid motifs, cable stitch rows, cutting weaving and webs.

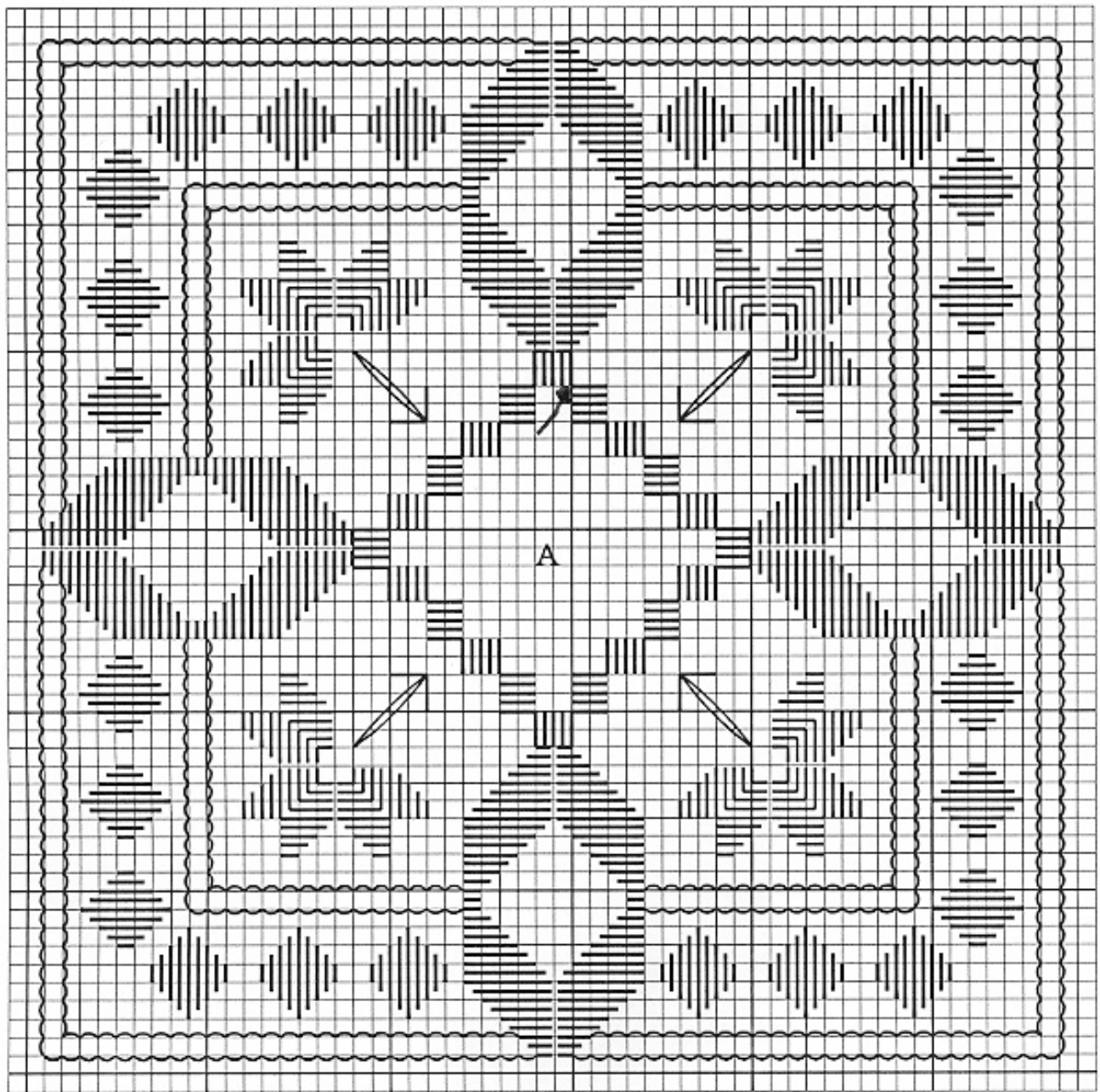
- \* This design would work well as a box lid insert for boxes:
  - \* Item 99178 Medium square oak box by Sudberry
  - \* Item 430-662-0001 oak wood box
  - \* Item 430-662-0002 cherry finish box
  
- \* Alternate uses: Pillow top insert
- \* Quilt square
- \* Framed
- \* Border design for runners, aprons, or curtains

Experiment with other color combinations. Let me know what you come up with.

Materials:

Lugana 28 count ct. - Antique Blue - 55" wide

ThreadworX Pearl #8 - Overcast



A - Woven bars and webs  
Every square of the chart represents 2 x 2  
threads of fabric.