



Finished Design Size: 4" x 6"

Working Instructions: Fold the fabric in half, both ways to find the center point of the fabric. From this center point, count two fabric threads to the right and 10 fabric threads up to begin the first satin stitch block (see arrow), using the yellow Elegance thread. Work all the satin stitch blocks in this row (row 4). Use the lavender thread for the cable stitch and long partial eyelet stitches. You can now go to either row 3 and work up to row 1 or go to row 5 and work down.

In rows 3 and 5, use lavender thread for the first and last satin stitch motif and yellow for the center motif. Use the corresponding color beads where shown.

In rows 2 and 6, the lavender motifs are eyelets in every other fabric hole on the outside, always returning to the center hole. After you have made the eyelets, add the "v"-shaped back stitches on each side as shown on the graph. The yellow motifs are satin stitch blocks with long corner stitches and eyelets in the center. Watch the chart for stitch lengths.

Row 1 and 7 are worked with yellow Elegance, starting at the center and working each stitch diagonally over four fabric threads. Place yellow beads in between each star motif.

In row 4, cut and remove fabric threads in the first and third motifs. Weave the bars with lavender Elegance and insert a center web and large outer web in each motif. Stitch the center Mill Hill Treasure7 in place in the center motif.

**Materials:**

Lugana 25 count ct. - Cream

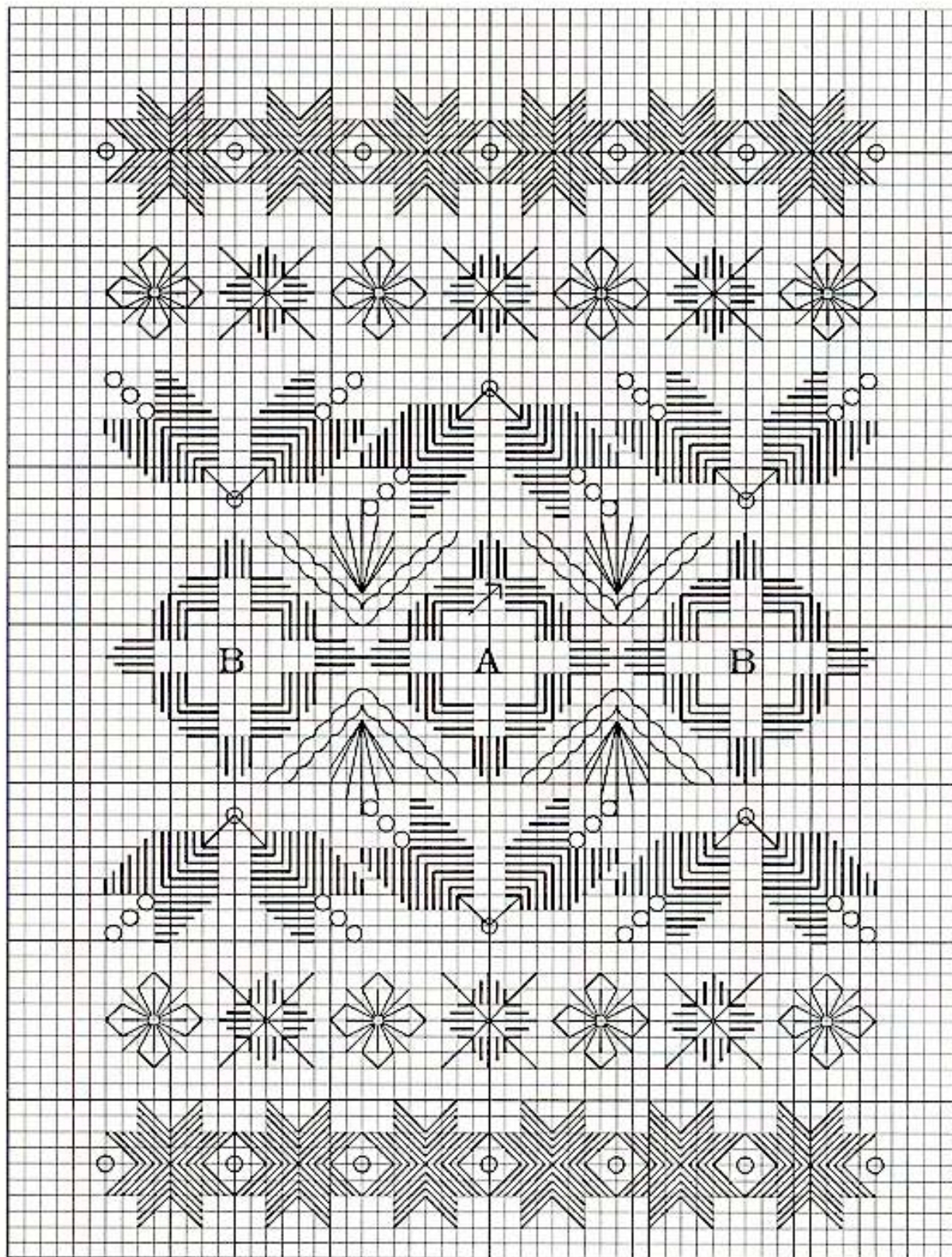
Mill Hill Glass Treasure-Song Bird Light Topaz - 12133

Mill Hill Beads-Ice Lilac 500/Pkg

Elegance-Maize

Elegance-Light Blue Violet

Mill Hill Beads - Pale Peach 500/Pkg



A - Mill Hill Treasure

B - Woven bars, center web and large outer web.

Every square of the chart represents

2 x 2 fabric threads.

Copyright 2003 Nordic Needle, Inc. 1314 Gateway Dr.

Fargo, ND 58103. 800-433-4321 [www.nordicneedle.com](http://www.nordicneedle.com)