



Finished Design Size: 5" x 5"

Working Instructions: From the top right corner of the fabric, measure 2" to the left and 2" down to begin satin stitch block in the corner. Work all the satin stitch blocks and continue with solid motifs and box stitch. Cut and remove threads and continue with woven bars and webs.

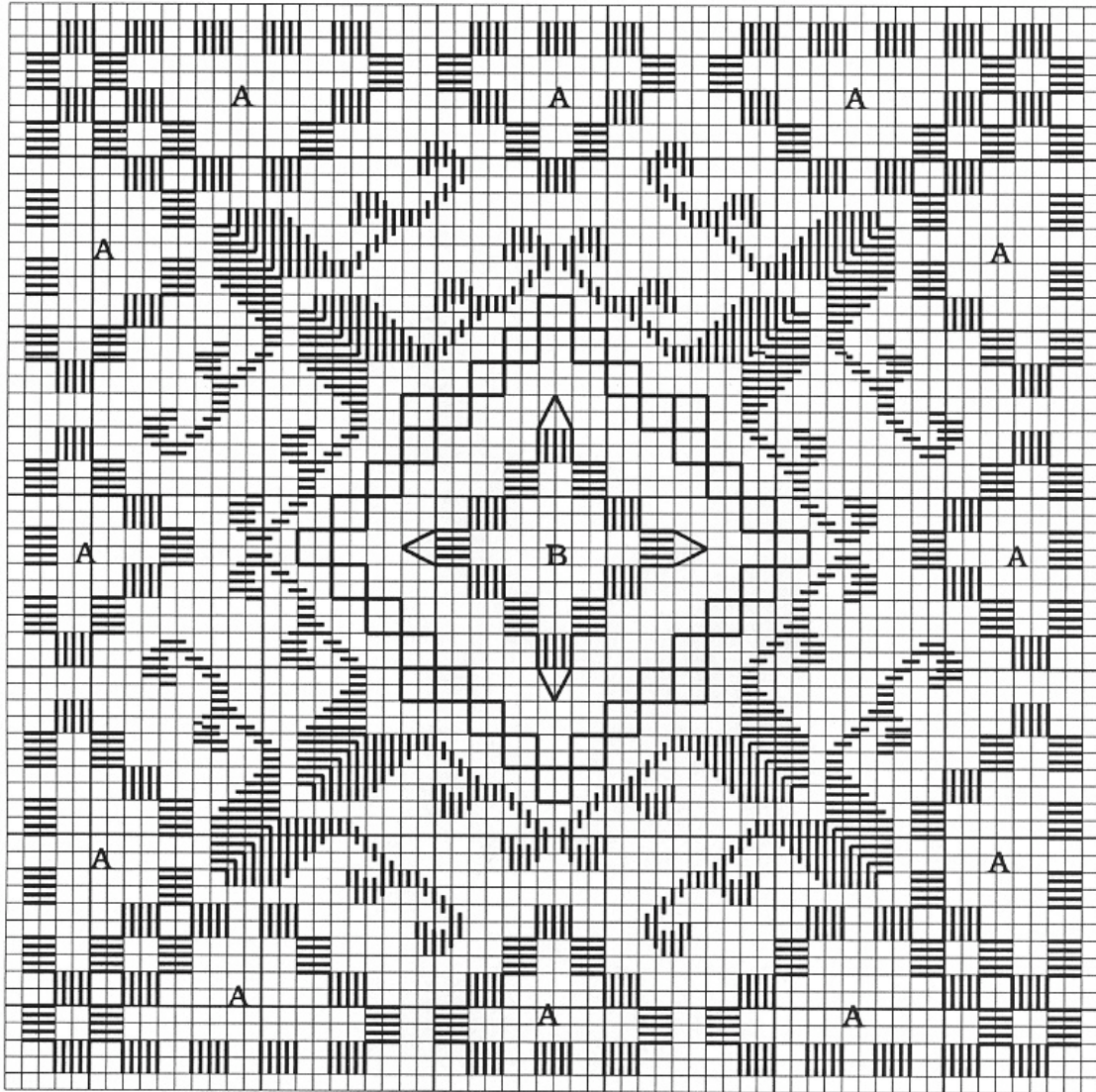
Finishing Ideas: Framed, box lid insert, pillow square, quilt square, handbag square or whatever your creative mind can imagine.

Use any color fabric and thread you wish to create a different look.

Materials:

Soft Congress Cloth - White - 24 count - 50" wide (Congressa)

Wildflowers-Tropic Seas



A - Woven bars and webs

B - Woven bars, webs, and large outer webs

Every square of the chart represents

2 x 2 fabric threads.