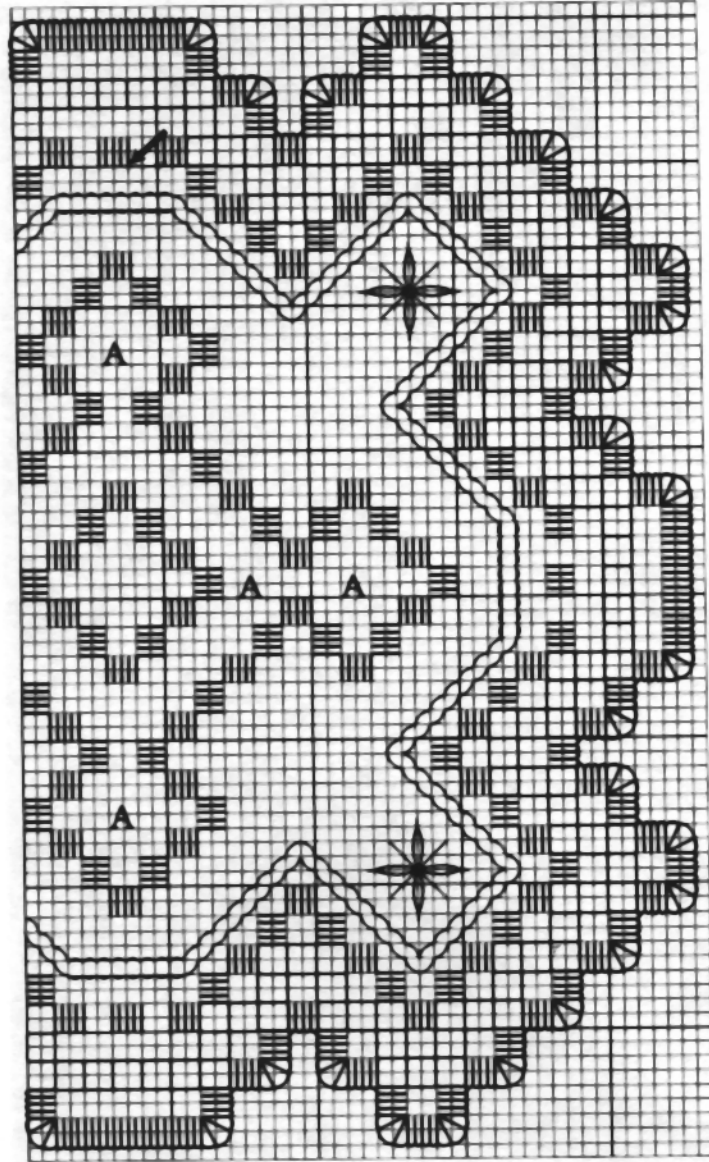


Finished Design Size: 7" x 7"

Working Instructions: Fold the fabric in half to find the center line. Measure down 2" to begin the first satin stitch block (see arrow on chart) using size #5 pearl cotton. Work all the satin stitch blocks. Use size #8 for buttonhole, box stitch, cable stitch, lazy daisies, cutting and woven bars.

Materials:

Hardanger fabric 22 count ct. - Ivory  
DMC Pearl Cotton Size #5 - Cream  
DMC Pearl Cotton Size #8- Cream  
DMC Pearl Cotton Size #12 - Cream  
Anchor Pearl Cotton Size #5 - Cream  
Anchor Pearl Cotton Size #8 - Cream  
Anchor Pearl Cotton Size #12 - Cream



A - Woven bars

Every square of the chart  
represents 2 x 2 threads of fabric