

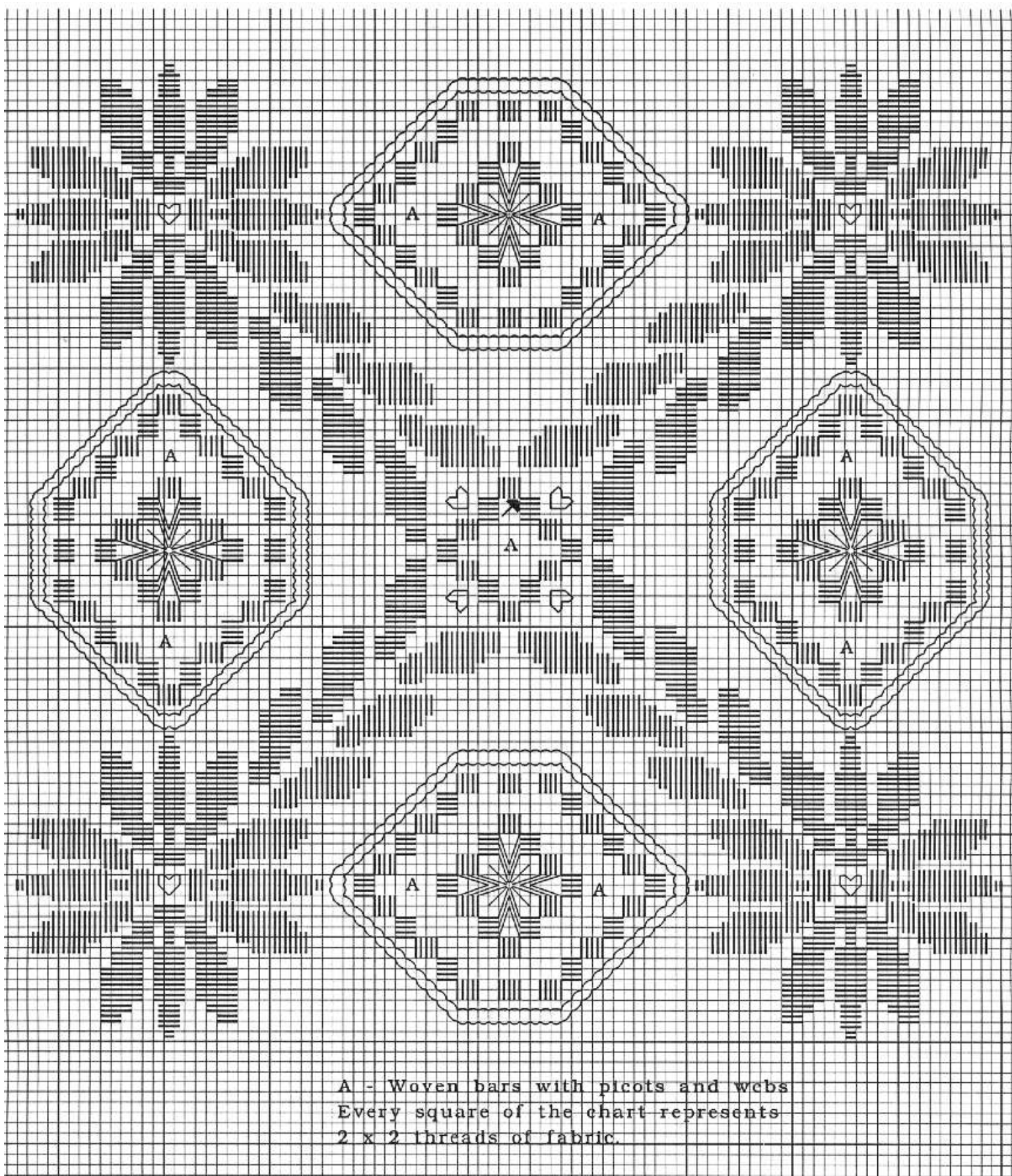


Finished Design Size: 7" x 7"

Working Instructions: Fold the fabric in half both ways to find the center point. From this point, count 2 fabric threads to the right and 10 fabric threads up to begin the first satin stitch block, using mocha brown thread (see arrow). Work the blue solid satin stitch motifs, followed by the mocha satin stitch blocks with large blue feather eyelets in the center. Cut and remove threads in the "A" sections. Use mocha thread for the woven bars, picots and webs. Attach heart pearl buttons. Press, right side down on a terry cloth, and it is ready to frame or to be used as a pillow top, box lid insert or hemmed for a doily. If you choose to hem this design, it would be better to begin with a 12" square of fabric.

Materials:

Cashel 28 count ct. linen - Raw (Natural) Linen  
DMC Pearl Cotton Size #8- Antique Blue Light  
DMC Pearl Cotton Size #8- Mocha Brown Very Light  
Heart Beads - Mother Of Pearl (12)



A - Woven bars with picots and webs  
Every square of the chart represents  
2 x 2 threads of fabric.