



Finished Design Size: 4.5" x 4.5"

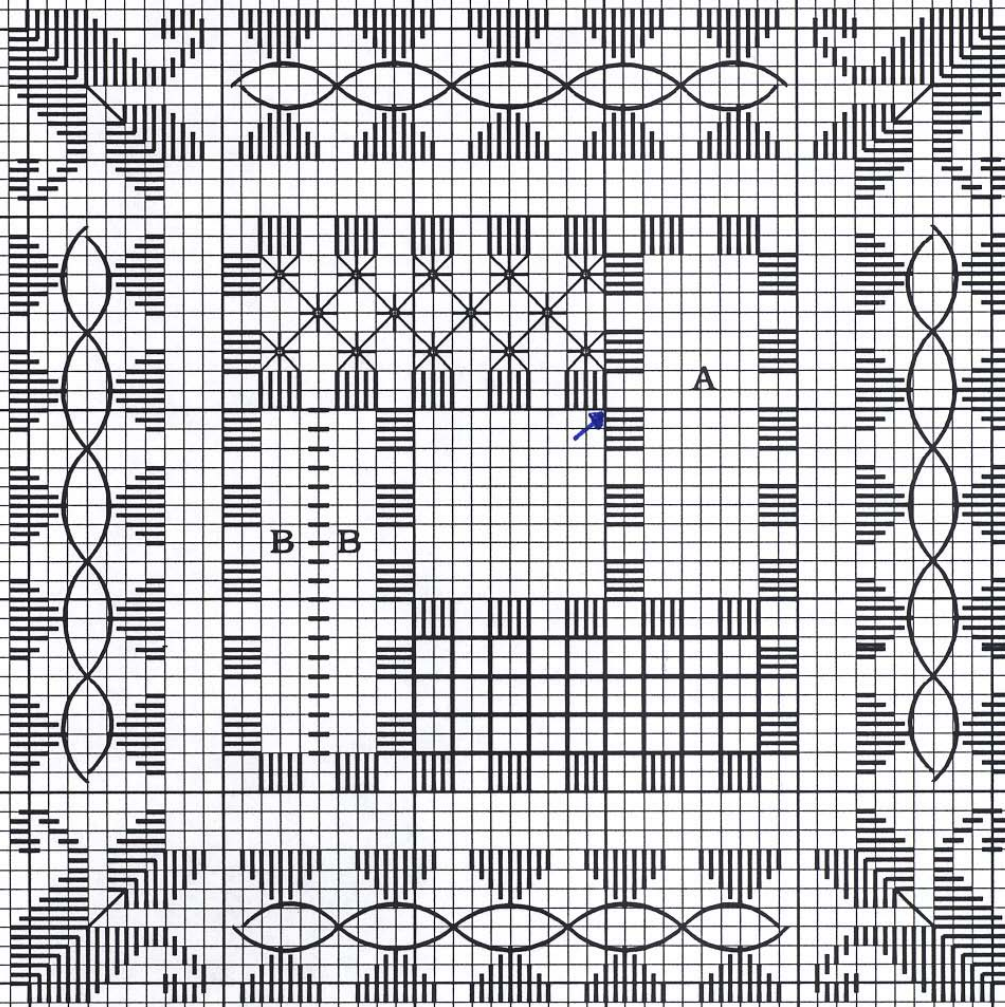
Working Instructions: Fold the fabric both ways to find the center fabric hole. From the center, count 10 fabric threads to the right and 10 fabric threads up to begin the first satin stitch block (see arrow), using size #5. Work all the satin stitch blocks and outer rows of solid motifs and running stitch that slides beneath the longest center stitch of the diamond shaped motifs along the border. Use size #5 for all of these stitches.

Use size #8 for block stitches, partial eyelets, twisted bars with short straight stitches between the twisted bar rows, woven bars and webs. Attach Mill Hill Treasure Squirrel in the center space. Frame in a 6" frame.

Materials:

Hardanger fabric - 22 count ct. Tea Dyed (58" wide)
Mill Hill Glass Treasure-Squirrel Matte Crystal - 12195
ThreadworX Pearl #5 - Fantasy Island
ThreadworX Pearl #8 - Fantasy Island

Every square of the chart represents
2 x 2 fabric threads.



A - Woven bars and webs
B - Twisted Bars