



Finished Design Size: 4.5" x 4.5"

Working Instructions: Fold the fabric in half both ways to find the center point. Stitch the center satin stitch blocks and continue with the solid motifs, box stitch, twisted bars, feathered eyelets, woven bars, picots and webs.

If worked on 22 count Hardanger fabric, the finished size will be 5.5" x 5.5". Use size #5 pearl cotton for the satin stitch blocks and solid motifs and size #8 for all other stitches. It would then work in a larger box like the ones shown here.

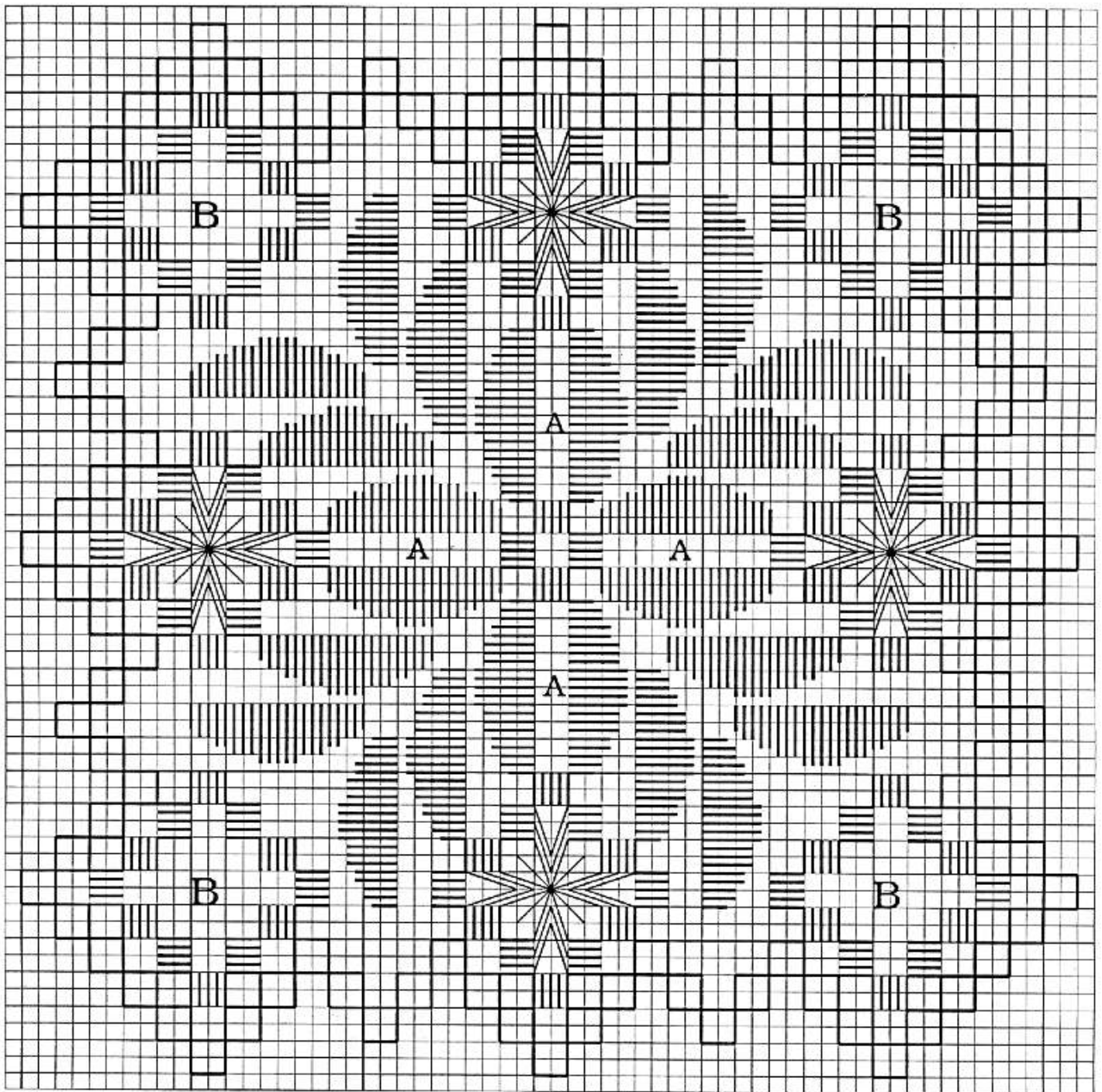
\* in light oak (430-662-0003)

\* in cherry finish (430-662-0004)

Materials:

Lugana 28 count ct. - Mushroom

ThreadworX Pearl #8 - Botanic Garden



A - Twisted Bars  
 B - Woven bars, picots and webs  
 Every square of the chart represents  
 2 x 2 threads of fabric.

Copyright 2000  
 Nordic Needle, Inc.  
 Designed as a FREE chart included  
 with handcrafted wooden boxes.



1314 Gateway Dr.  
 Fargo, ND 58103  
 701-235-5231  
 1-800-433-4321  
 Fax: 701-235-0952

Email: [info@nordicneedle.com](mailto:info@nordicneedle.com)  
 website: [www.nordicneedle.com](http://www.nordicneedle.com)