



Finished Design Size: 6" x 6"

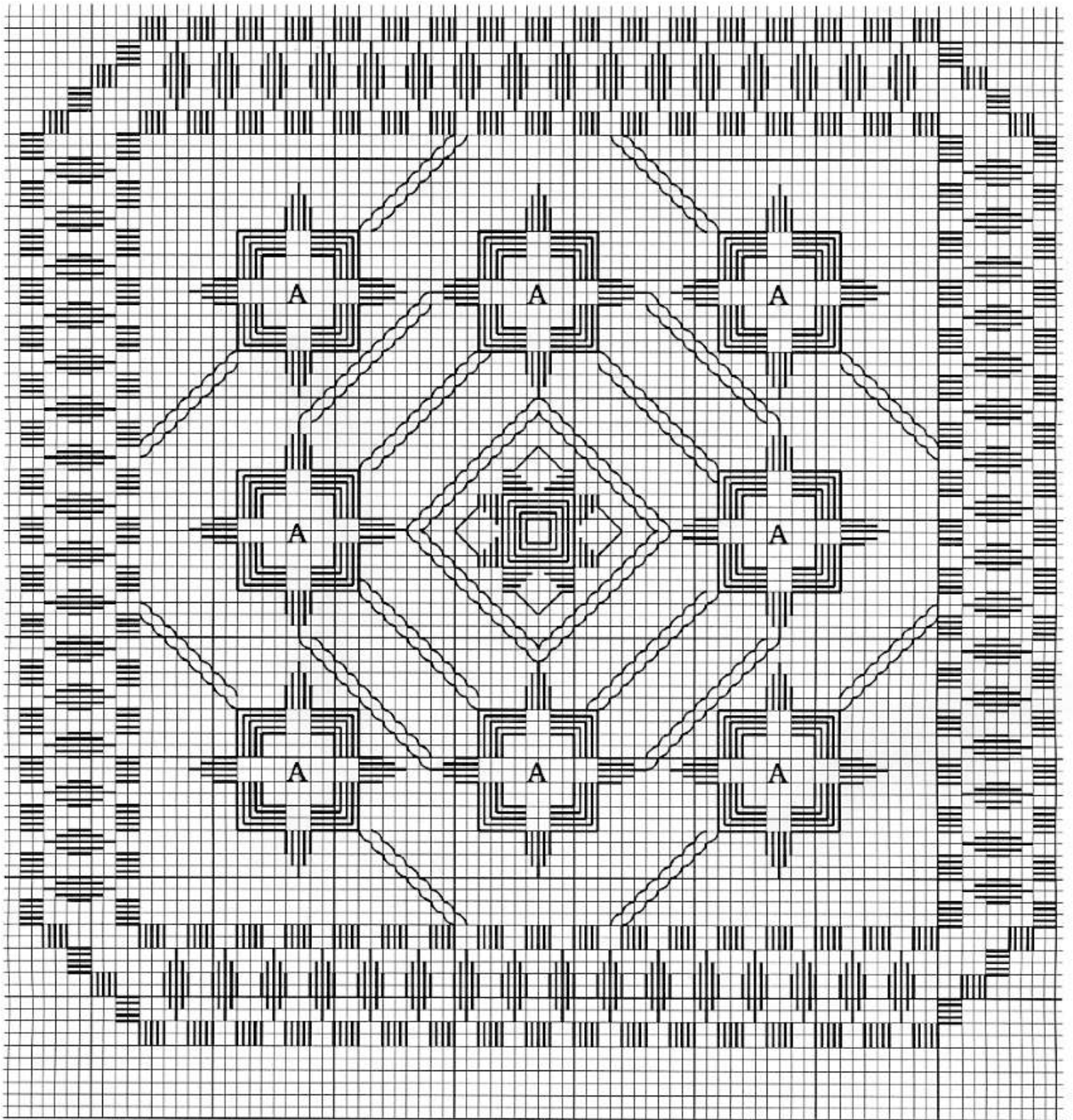
Working Instructions: Fold fabric in half to find center line. Measure down 2" to begin first satin stitch block in the center of the outside row. Work all the satin stitch blocks, solid motifs, and cable stitch. Continue with cutting, woven bars, small center webs and large outer webs in section A.

Finishing ideas: Framed, box lid insert, pillow square, quilt square, handbag square, or whatever your creative mind can imagine. Use any of the new Jazlyn colors with coordinating overdyed #8 pearl cotton threads for a new look every time.

As with any Hardanger design, it can be stitched on any count and color of evenweave fabric you choose.

Materials:

Vintage Lugana 28 count ct. linen - Vintage Autumn Field
Wildflowers-Cameo



A - Woven bars, center web and large outer web
Every square of the chart represents 2 x 2 fabric threads.