



Finished Design Size: 5.5" x 5.5"

Working Instructions: From the top right corner of the fabric, measure 2" to the left and 2" down to begin the first satin stitch star motif in the corner of the border. Work all the motifs and continue with the solid satin stitch rows for the twisted bars stitch. The corner motifs of the twisted bar row are flower-shaped eyelets. Begin in the center and follow the diagram around the circle. The long stitches on the four sides are actually two stitches side by side. Do a back-stitch around the outside with each stitch going over 6 fabric threads.

Continue with the next row of solid star motifs. Work the center four motifs. Cut and remove four fabric threads from each motif corner, leaving just the four center fabric threads on each side. Stitch the adjoining wrap stitch in each of these four spaces. Finish with the center flower-shaped eyelet.

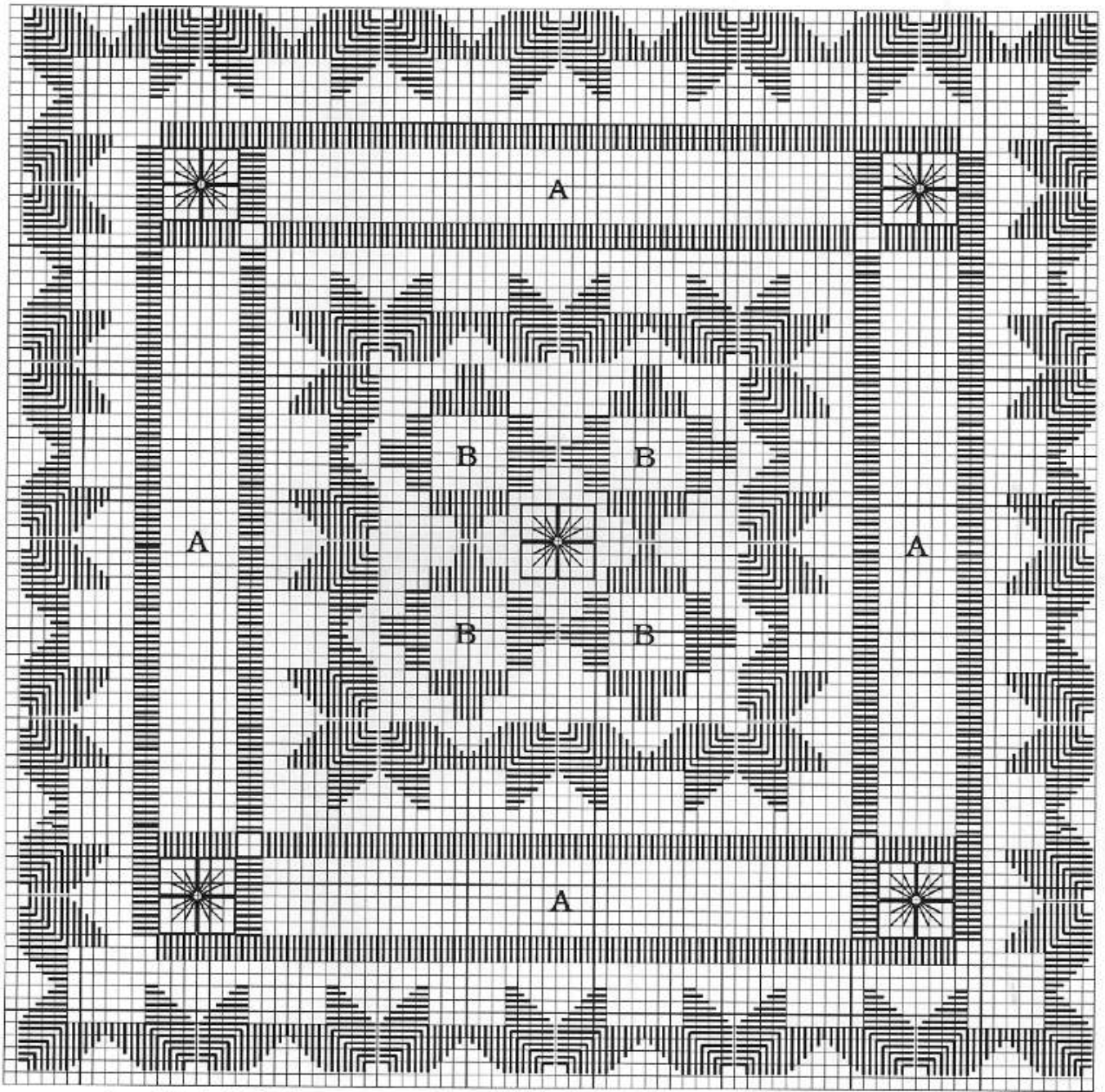
* Finishing ideas: This design would look great in a box top, Item 430-662-0003

* How about using this design framed, as a quilt square, a pillow decoration, pockets on an apron or jumper, or how about sewn onto the front of a tote bag! Stitch several in a row for a bellpull or runner, or go crazy and use this as a repeating border for a tablecloth. If you repeat the star border you end up with a complete star separating the squares. Have fun creating.

As with any Hardanger design, it can be stitched on any count and color of evenweave fabric you choose.

Materials:

ThreadworX Pearl #8 - Summer Shadows



A - Twisted bars B - Adjoining Wrap
 Every square of the chart represents 2 x 2 fabric threads.