



Finished Design Size: 7" x 7"

Working Instructions: Fold the fabric in half to find the center line. Measure down 2" to begin the first satin stitch block (see arrow) using Watercolours. Work all the satin stitch blocks and solid ship motifs with Watercolours. Use size #8 pearl cotton for cable stitch, twisted bars, woven bars, picots, webs and corner-to-corner webs.

Materials:

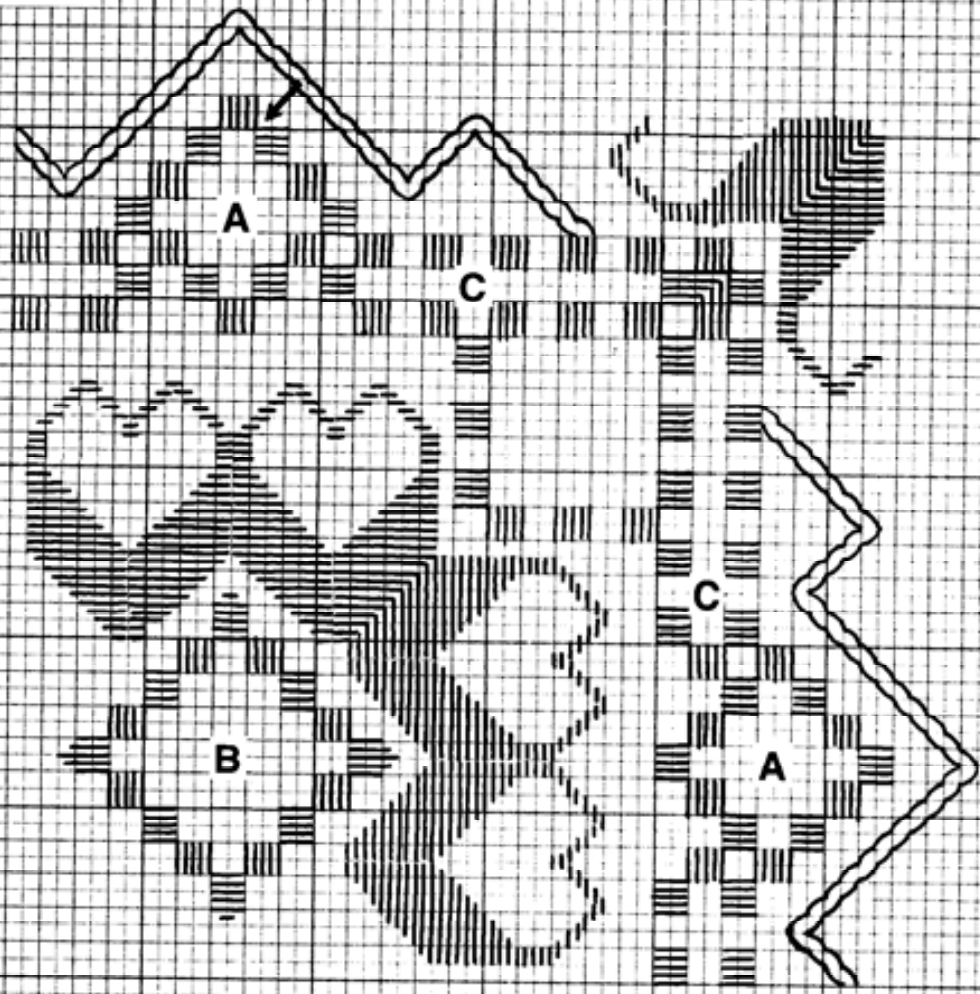
Hardanger fabric - 22 count ct. Antique Green (58" wide)

DMC Pearl Cotton Size #8- Blue Green-Med

Anchor Pearl Cotton Size #8 - Dusty Green Pale

Watercolours - Desert Sage

Each square of the chart represents 2 x 2 threads of fabric.



- A** Woven bars, picots and corner-to-corner webs
- B** Woven bars, picots and web
- C** Twisted bars