



Finished Design Size: 6.5" square

Choose your own color scheme, matching the pillow to your thread choice.

Working Instructions: From the top right corner of the fabric, measure 2" to the left and 2" down to begin the first corner satin stitch motif, using one strand of size #3 pearl cotton. Work all the solid motifs and satin stitch blocks with size #5. Use size #5 pearl cotton for the block stitches. Continue with cutting, cable stitch, adjoining wrap in the center, and woven bars with webs.

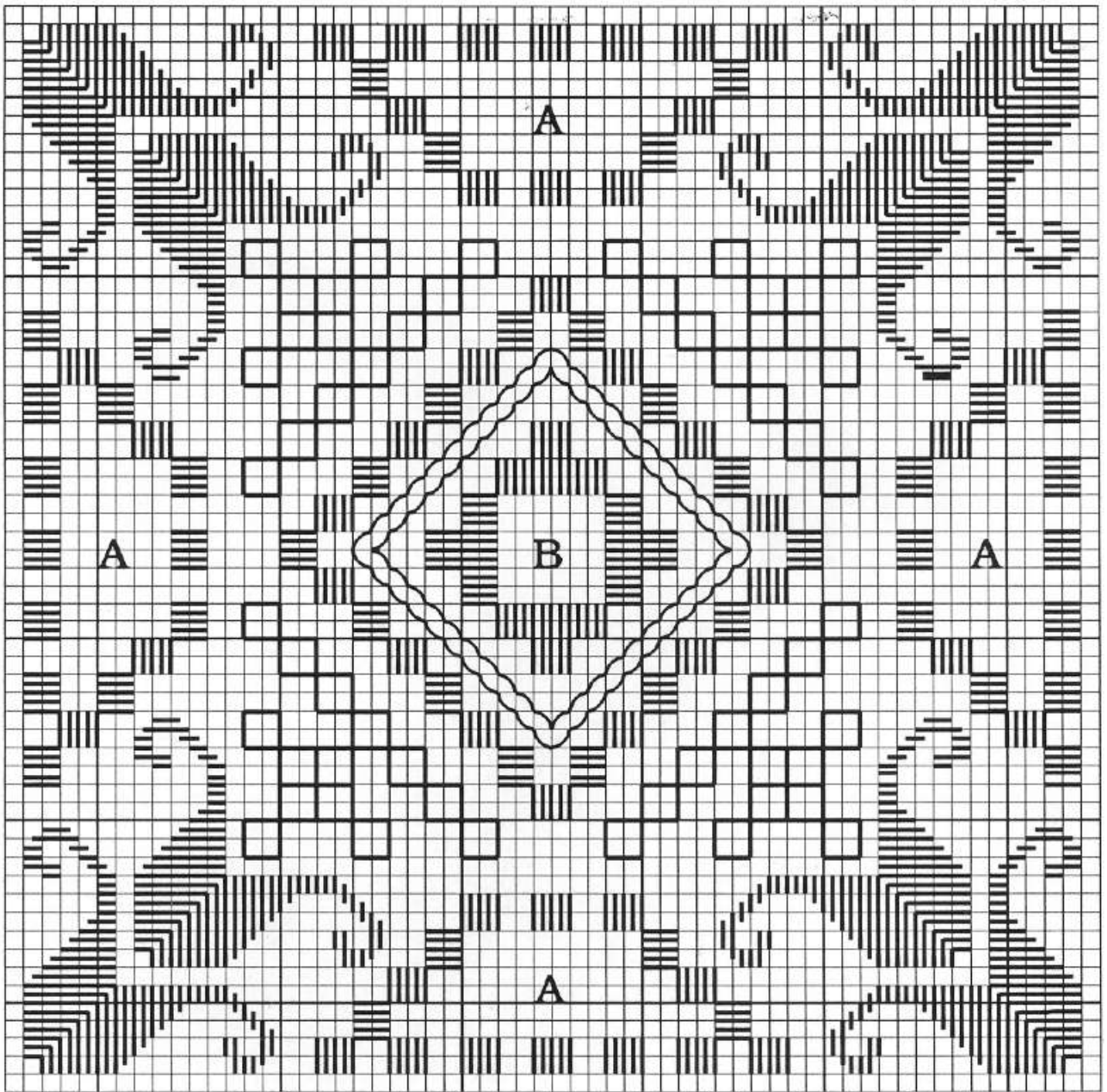
From each side, count out 28 fabric threads and trim off excess fabric. Count out eight threads from each side and sew a straight row on the sewing machine. Fringe away fabric threads up to this hemline. Stitch onto a pillow or use as a table mat.

Materials:

Leah's #3 - Green Mist

Anchor Pearl Cotton Size #5 - Dusty Green Dark

Anchor Pearl Cotton Size #8 - Dusty Green Dark



A - Woven bars and webs

B - Adjoining wrap

Every square of the chart represents 2 x 2
fabric threads.