



Finished Design Size: 3.75" x 3.75"

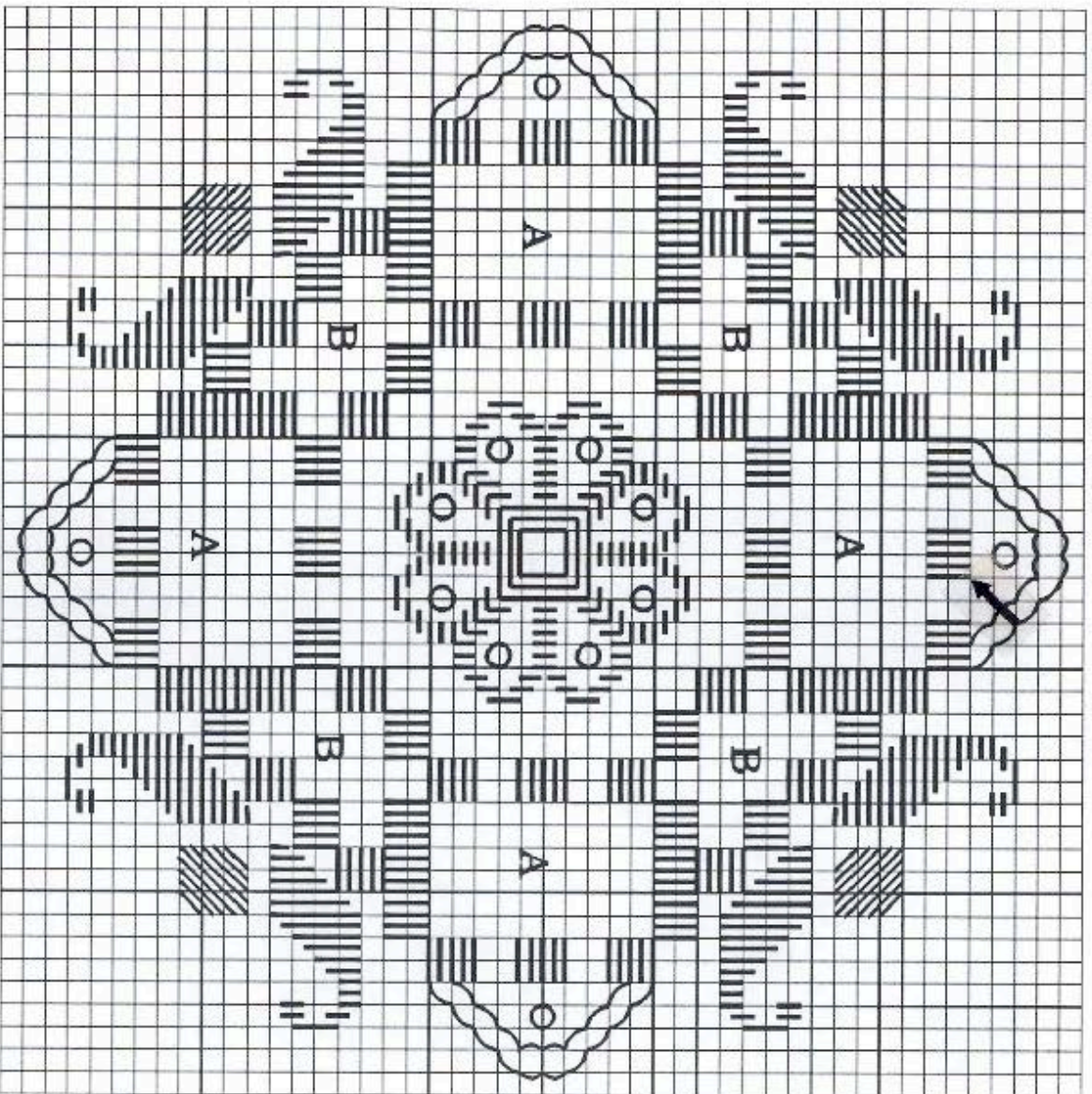
Working Instructions: Fold the fabric in half to find the center line. From the top edge, measure down 1.5" to begin the first satin stitch block (see arrow). Work all the satin stitch blocks, solid motifs, cable stitch, twisted bars, woven bars and picots. Use the Professional Touch Rhinestone Applicator (item #8200) to apply the Hot-Fix Swarovski Zilion Crystals. Small circles on graph indicate placement of Crystals.

**Materials:**

Lugana 25 count ct. - Cream

3mm Crystal AB Swarovski Xilion Hot-Fix Embellishments

Leah's #8 - Chili Peppers



A - Twisted bars

B - Woven bars and picots

Every square of the chart represents 2 x 2 fabric threads.