



Finished Design Size: 4.25" x 4.25

Working Instructions: Fold the fabric in half to find the center line. From the top edge, measure down 2.25" and 4 fabric threads to the right to begin the first satin stitch block (see arrow). Work all the satin stitch blocks, solid motifs, cable stitch, woven bars, spokes, corner to corner web and cross filling stitches. Use the Professional Touch Rhinestone Applicator (item #8200) to apply the Hot-Fix Swarovski Zilion Crystals. Large circles on graph indicate placement of Crystals.

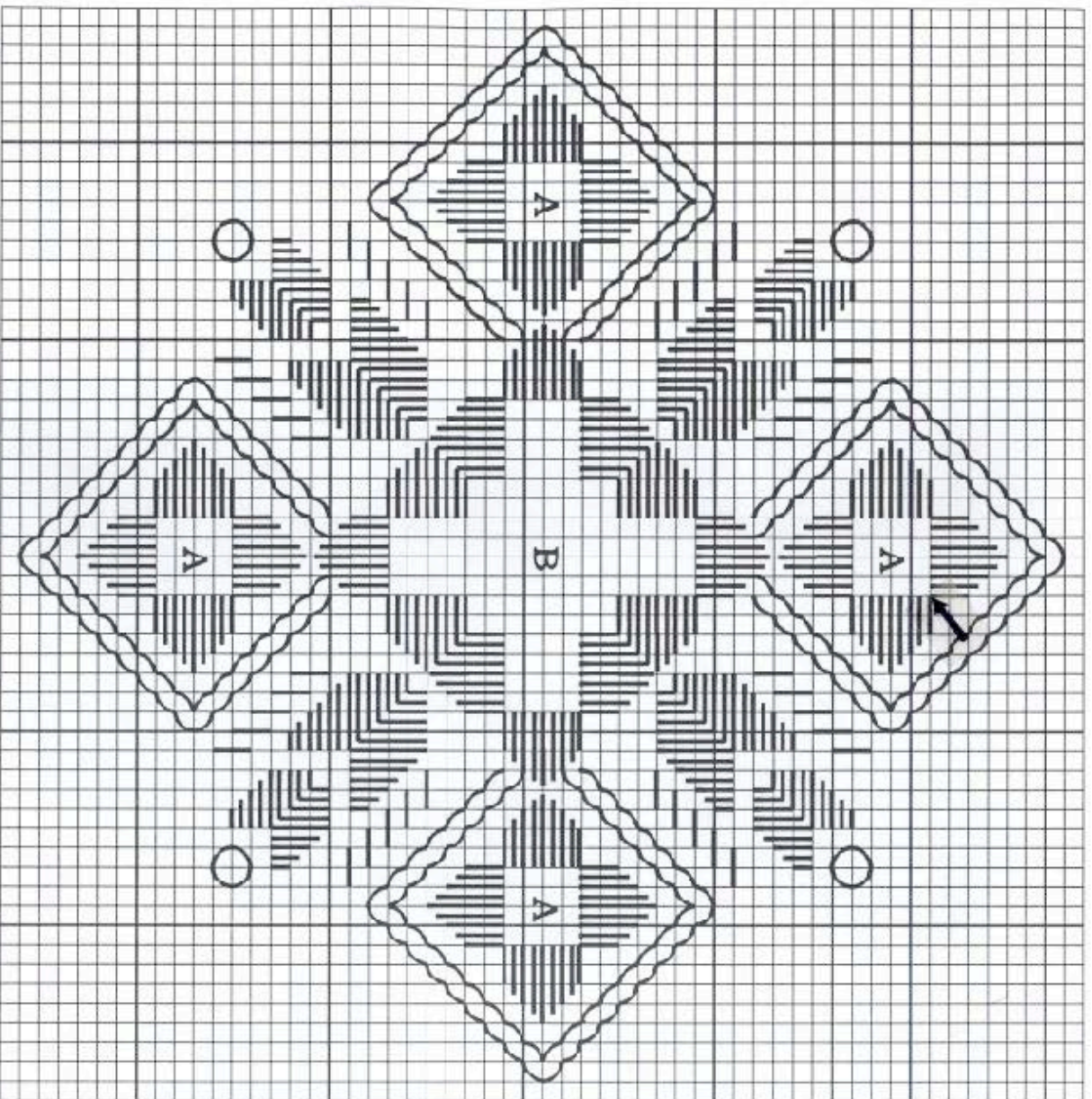
Special note: In sections "A", cut only two fabric threads each way in the four corners. In other words, cut two threads, leave four and cut two on all four sides.

Materials:

Lugana 25 count ct. - Cream

4mm Crystal AB Swarovski Xilion Hot-Fix Embellishments

Wildflowers-Teak



A - Woven bars and spokes  
 B - Woven bars, center  
 corner to corner web and  
 cross filling stitch

Every square of the chart  
 represents 2 x 2 fabric  
 threads.