

Finished Design Size: 3" x 3"

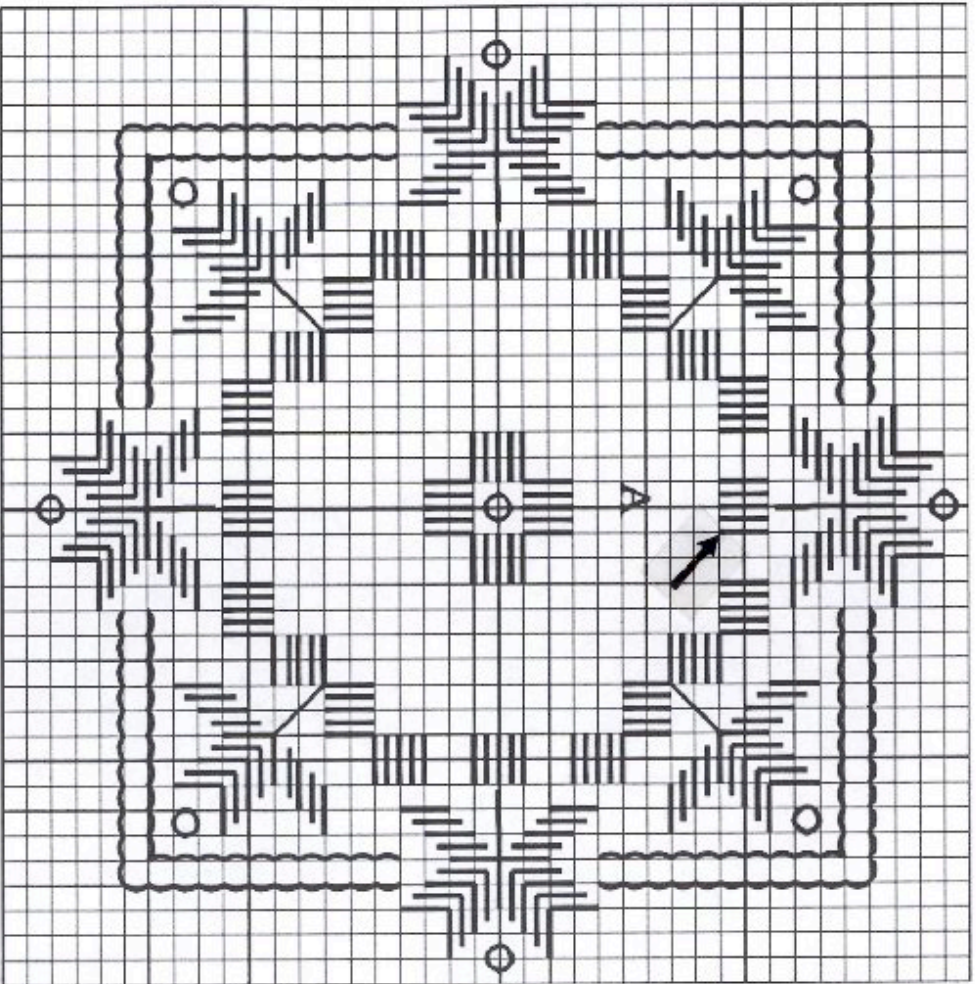
Working Instructions: Fold the fabric in half to find the center line. From the top edge, measure down 2.25" to begin the first satin stitch block (see arrow). Work all the satin stitch blocks, solid motifs, straight cable stitch, woven bars, and webs. Use the Professional Touch Rhinestone Applicator (item #8200) to apply the Hot-Fix Swarovski Zilion Crystals. Small circles on graph indicate placement of Crystals.

Materials:

Leah's #8 - Wisteria

Lugana 25 count ct. - Cream

3mm Crystal AB Swarovski Xilion Hot-Fix Embellishments



A - Woven bars with webs  
 Every square of the chart  
 represents 2 x 2 fabric threads.