



Finished Design Size: 3.75" x 3.75"

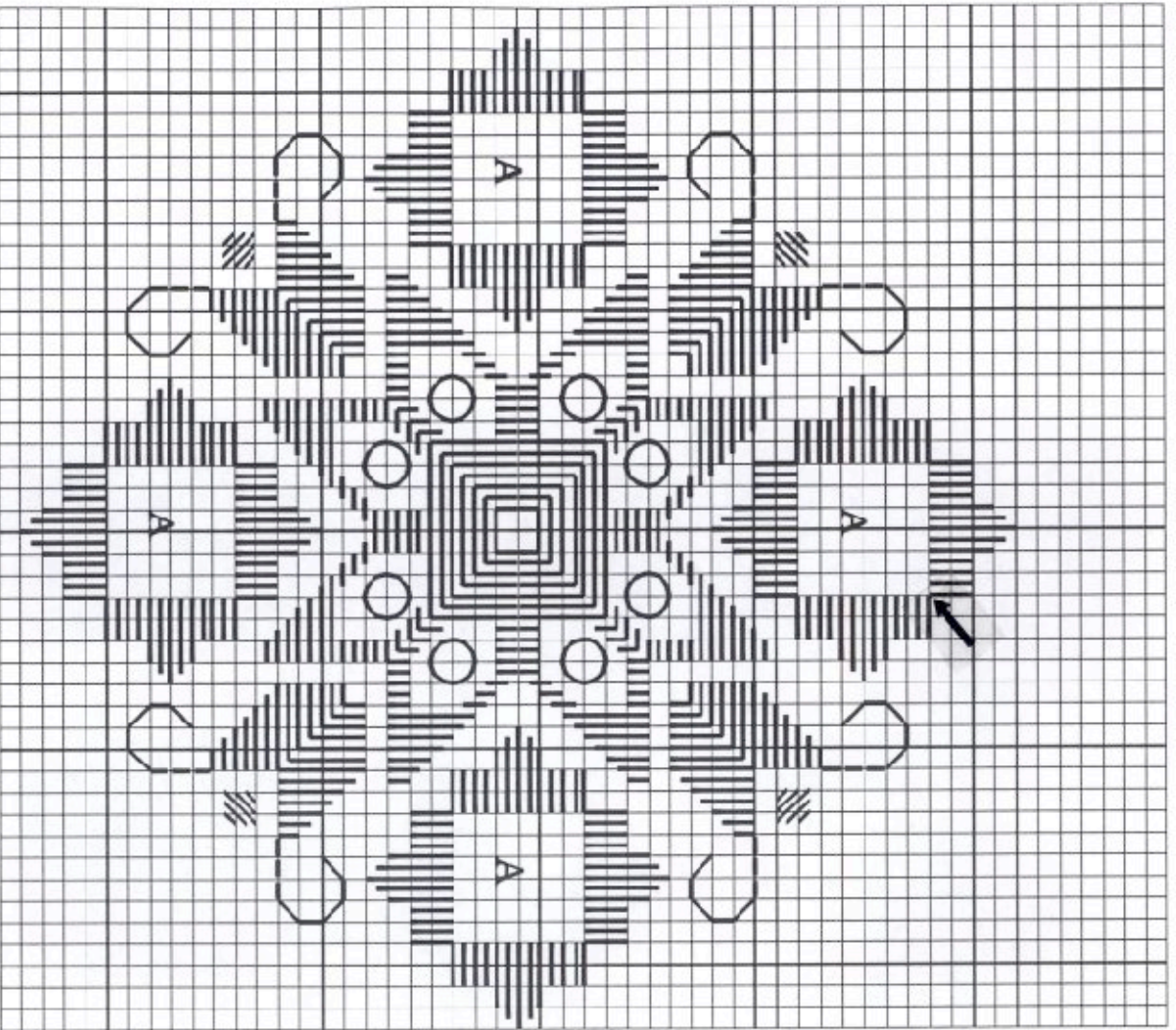
Working Instructions: Fold the fabric in half to find the center line. From the top edge, measure down 1.5", and 6 fabric threads to the right to begin the first satin stitch motif (see arrow). Work all the satin stitch motifs, solid motifs, woven bars, and spokes. Use the Professional Touch Rhinestone Applicator (item #8200) to apply the Hot-Fix Swarovski Zilion Crystals. Large circles on graph indicate placement of Crystals.

Materials:

Lugana 25 count ct. - Cream

4mm Crystal AB Swarovski Xilion Hot-Fix Embellishments

Leah's #8 - Aqua Sea



A - Woven bars with spokes
Every square of the chart
represents 2 x 2 fabric threads.