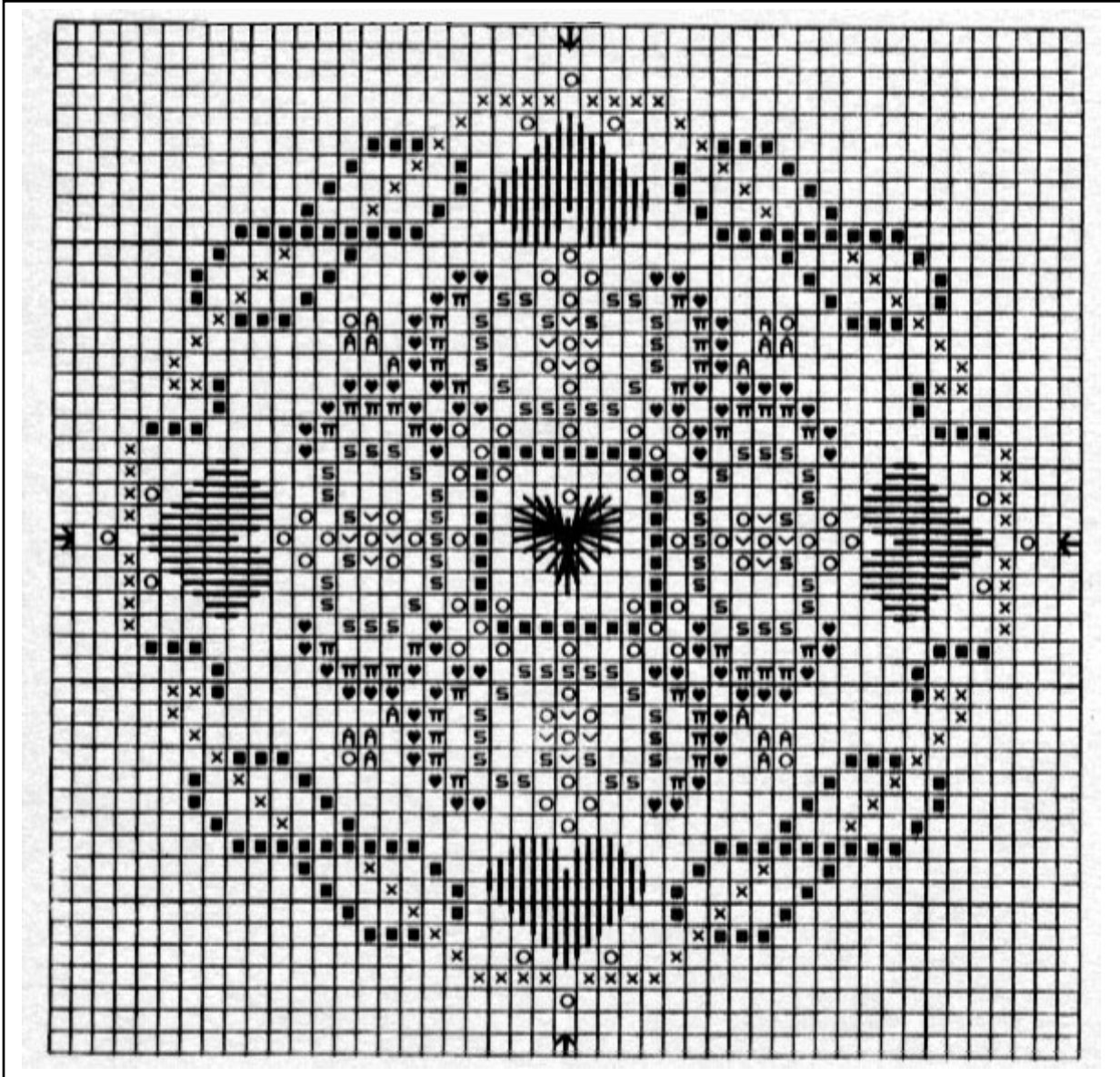




Stitch this beautiful design from Just Nan.

Working Instructions: Follow straight lines on graph to work Satin stitch hearts in 2 strands 902. Work Rhodes Heart in center using 2 strands 902. Attach beads with a beading needle and 1 strand 640 floss.



SYMBOL	DMC	
♥	315 Dark Mauve	
■	500/085 (2 Dark Green, 1 Balger)	
X	501 Medium Green	
A	902 Dark Wine	
S	3041 Medium Lavender	
T	3726 Medium Mauve	
V	3740 Dark Lavender	
O	SJ 1858 or MH 40557 Gold Bead	
FABRIC: ZWEIGART® 32 Ct Raw Belfast Linen		
DESIGN AREA 43H X 43W	28 Count	3" X 3"
	32 Count	2 1/4" X 2 1/4"