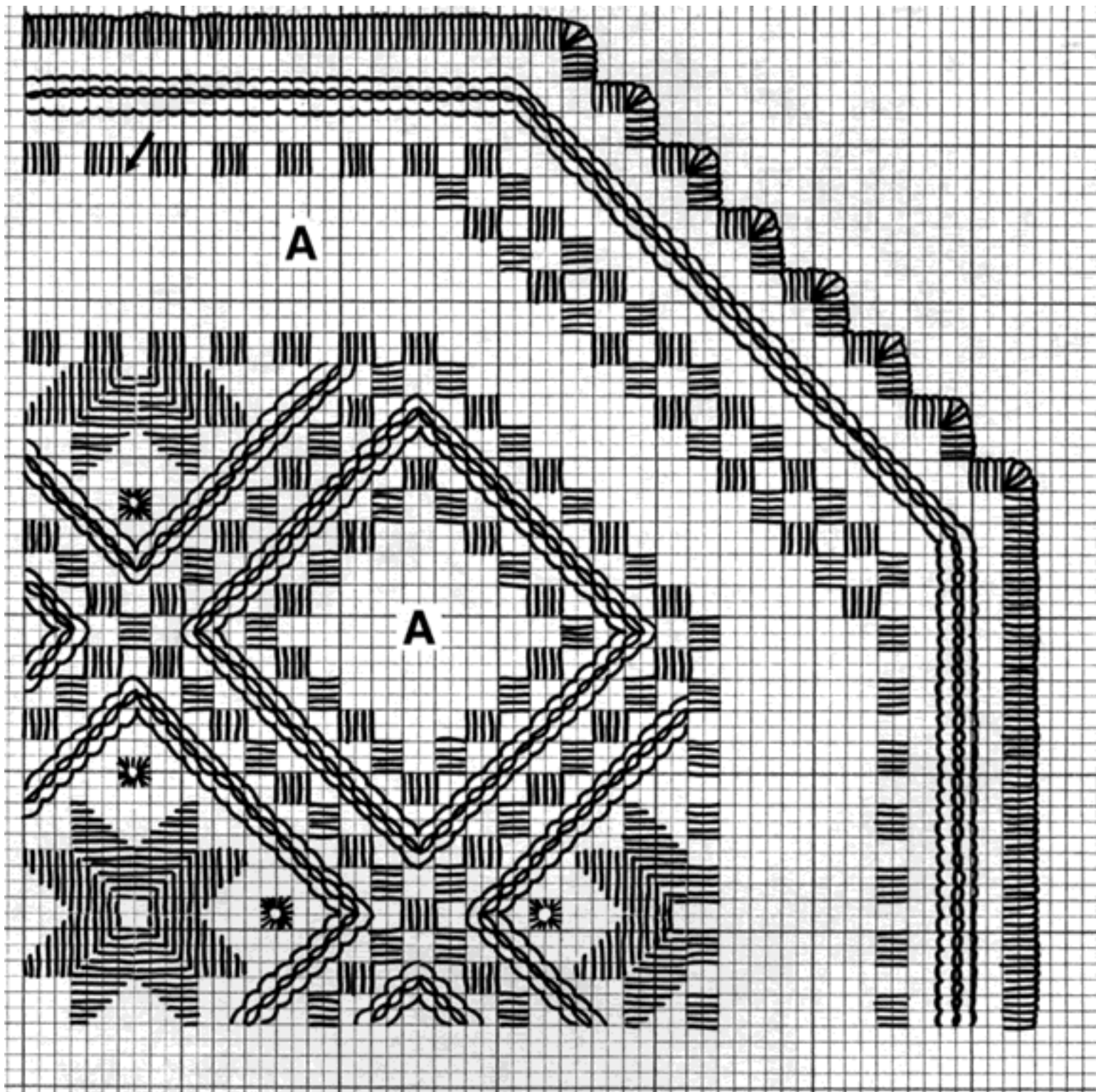


Finished Design Size: 10" x 10"

Working Instructions: Fold the fabric in half to find the center line. Measure down 1" to begin the first satin stitch (see arrow) using size #5 pearl cotton. Work all the satin stitches, solid motifs and buttonhole edge with size #5. Use size #8 for cable stitch, eyelets, woven bars, picots and webs.

Materials:

Hardanger fabric 22 count ct. - Ivory
DMC Pearl Cotton Size #5 - Cream
DMC Pearl Cotton Size #8- Cream
Anchor Pearl Cotton Size #5 - Cream
Anchor Pearl Cotton Size #8 - Cream



Each square of the chart represents 2 x 2 threads of fabric.

A - Woven bars, picots and webs