



Finished Design Size: 5" round

Working Instructions: Fold the fabric in half to find the center line. Measure down 1-3/4" to begin the first satin stitch block (see arrow on chart) using white pearl cotton. Work all the satin stitch blocks, satin stitch rows, cable stitch, buttonhole edge and adjoining wrap using white. Use Treasure Braid for solid motifs and cross stitch. Attach bead clusters and charm.

This beautiful little ornament is quick to stitch! This is just one of fourteen ornament designs in book #0232, Christmas Trimmings in Hardanger Embroidery.

Materials:

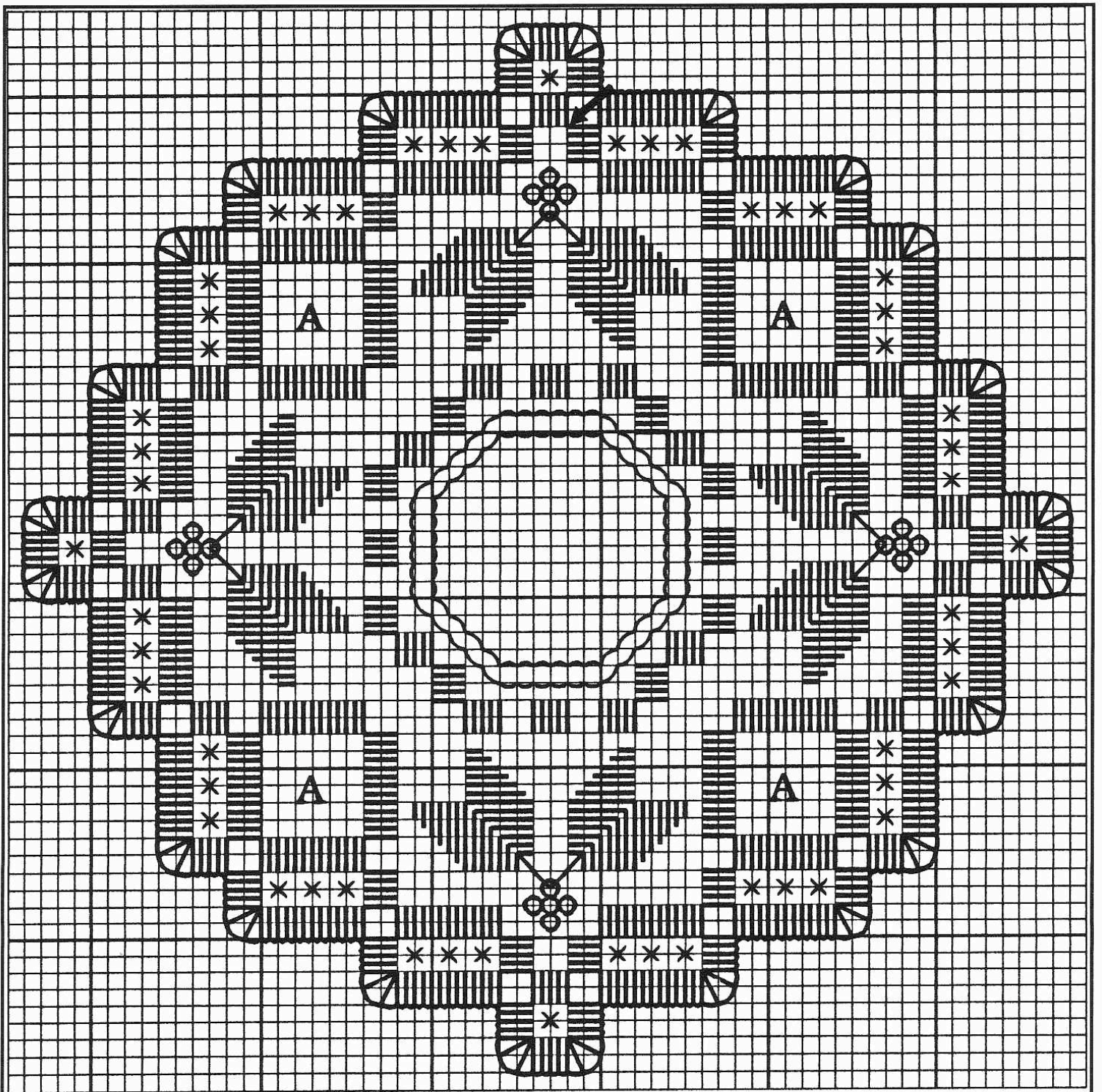
Soft Congress Cloth - White - 24 count - 50" wide (Congressa)

DMC Pearl Cotton Size #8 - Snow White

Christmas Greens Charm Assortment

Frosted Red Red Beads

Treasure Braid Size 4 - Green



A - Adjoining wrap

Every square of the chart represents
2 x 2 threads of fabric.