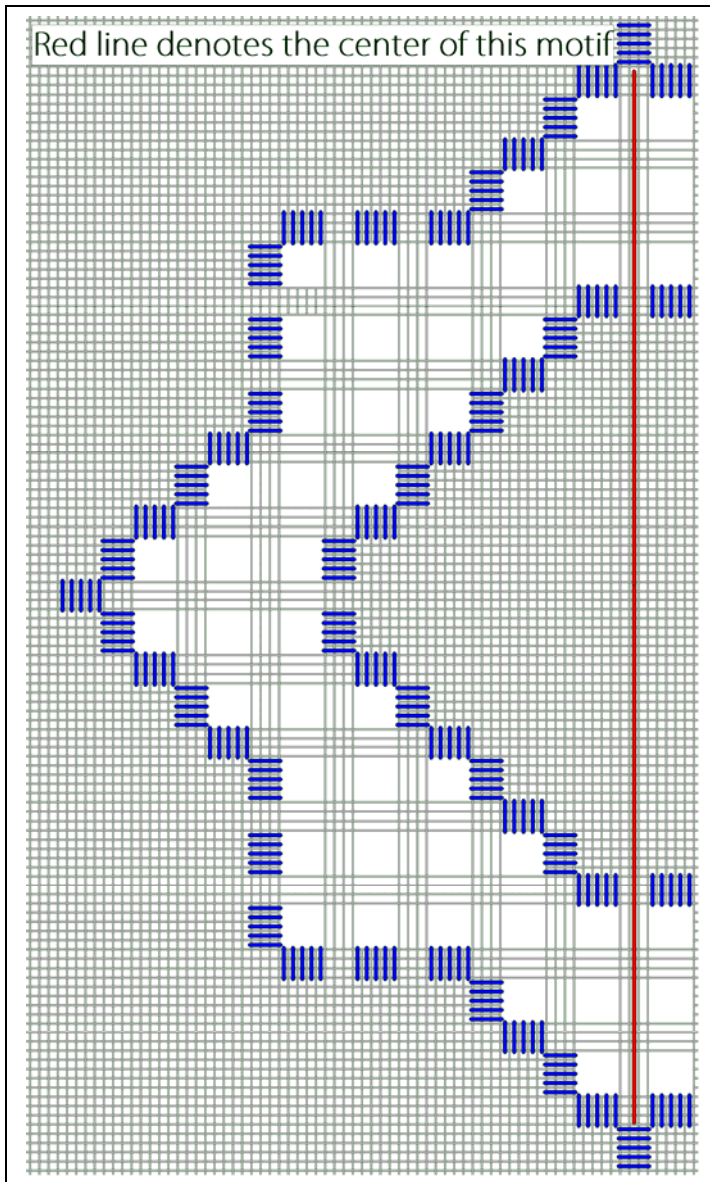


## Kerrie's Stitch (Woven Triangles)

This is the cutwork and filling stitches in Kerrie's piece shown on pages 15-19 of the 2012 Award Winning Hardanger Book, #0250.

The cutting diagram:



Notice that this shows just the left side of the motif. The center of the motif is shown by the red line.

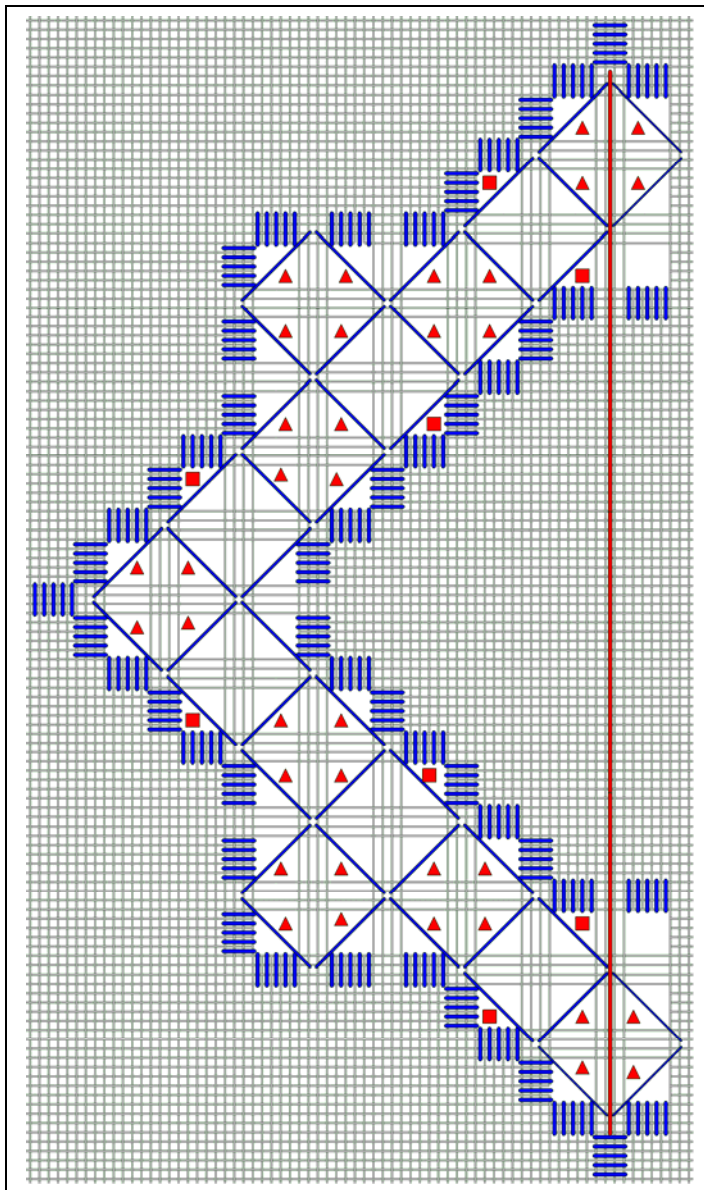
Carefully cut and withdraw the fabric threads to form this grid.

The thread used to complete this motif is DMC Pearl Cotton Size 12 color 712.

The instructions assume the stitcher is an advanced stitcher and is familiar with the stitching techniques.

Kerrie's Stitch used in Kerrie Goeldner's award winning Hardanger design in the Award Winning Hardanger Design 2012 book (#0250) published by Nordic Needle, Inc.

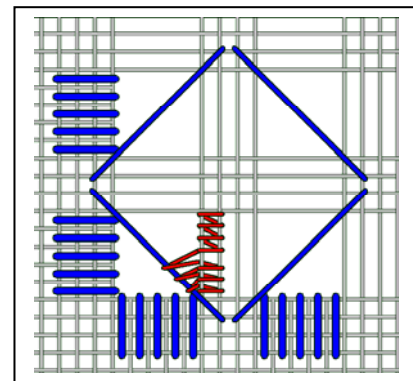
First, add half of the spokes, indicated by the blue lines on the chart below, creating a series of boxes which will be the framework for the remainder of the needleweaving.



There is no right or wrong order to create the spokes. You will find yourself traveling under the satin stitches. One suggestion is to start along the outer edge creating the spokes that terminate along that edge. Then go into the center and add in the rest of the spokes that terminate along that edge.

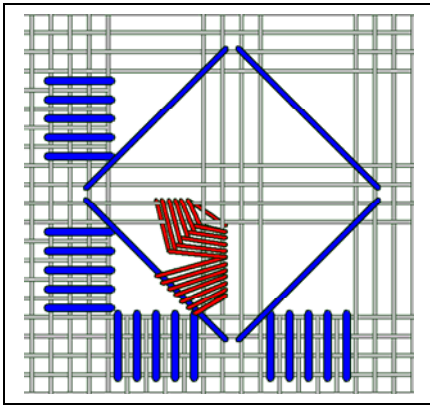
**IMPORTANT:** Be sure that the spokes match this pattern. You will fill in the rest of the spokes after the woven triangles are done.

The Kerrie stitch (woven triangles) is done around the inside of the spoke on each side of the diamond. The placement of the Kerrie stitch is shown on the chart above by the red triangles. The squares indicate a partial woven stitch which is discussed after the Kerrie stitch instructions.

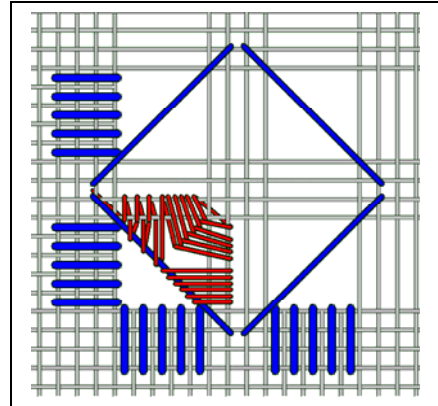


Secure your thread and begin weaving back and forth between the unwrapped bar and the spoke. Weave until you are half-way up the bar, then wrap the remainder of the bar to the center.

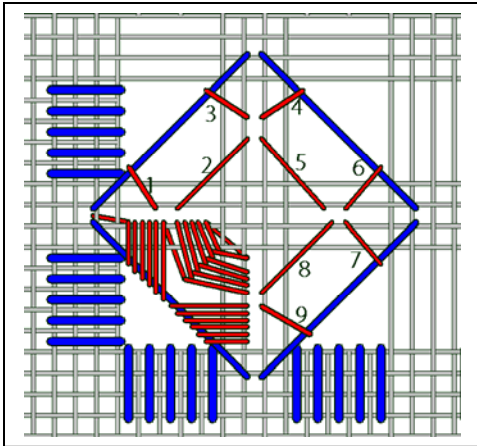
Kerrie's Stitch used in Kerrie Goeldner's award winning Hardanger design in the Award Winning Hardanger Design 2012 book (#0250) published by Nordic Needle, Inc.



Next weave back and forth between the wrapped and unwrapped bars until you are half-way across the unwrapped bar.

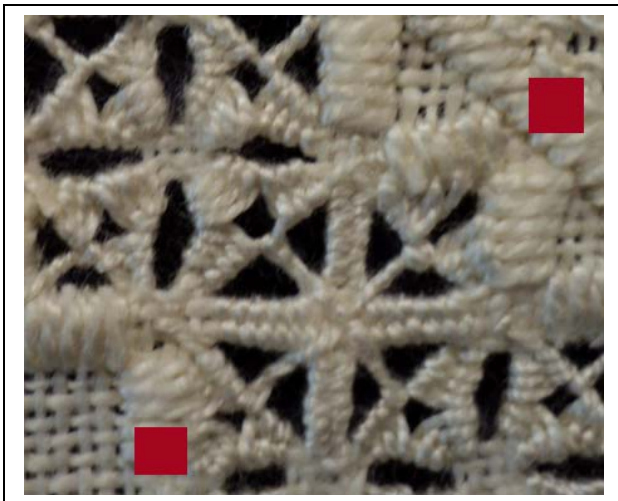
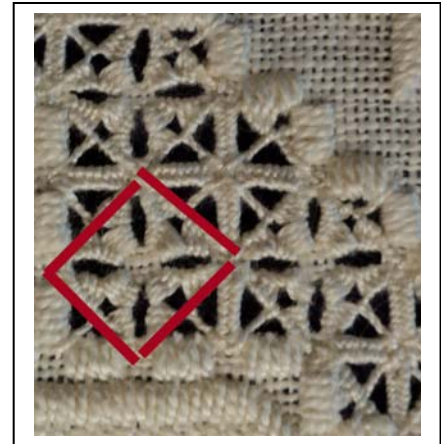


Finish the woven triangle by weaving between the unwrapped bar and the spoke until you reach the satin stitches.



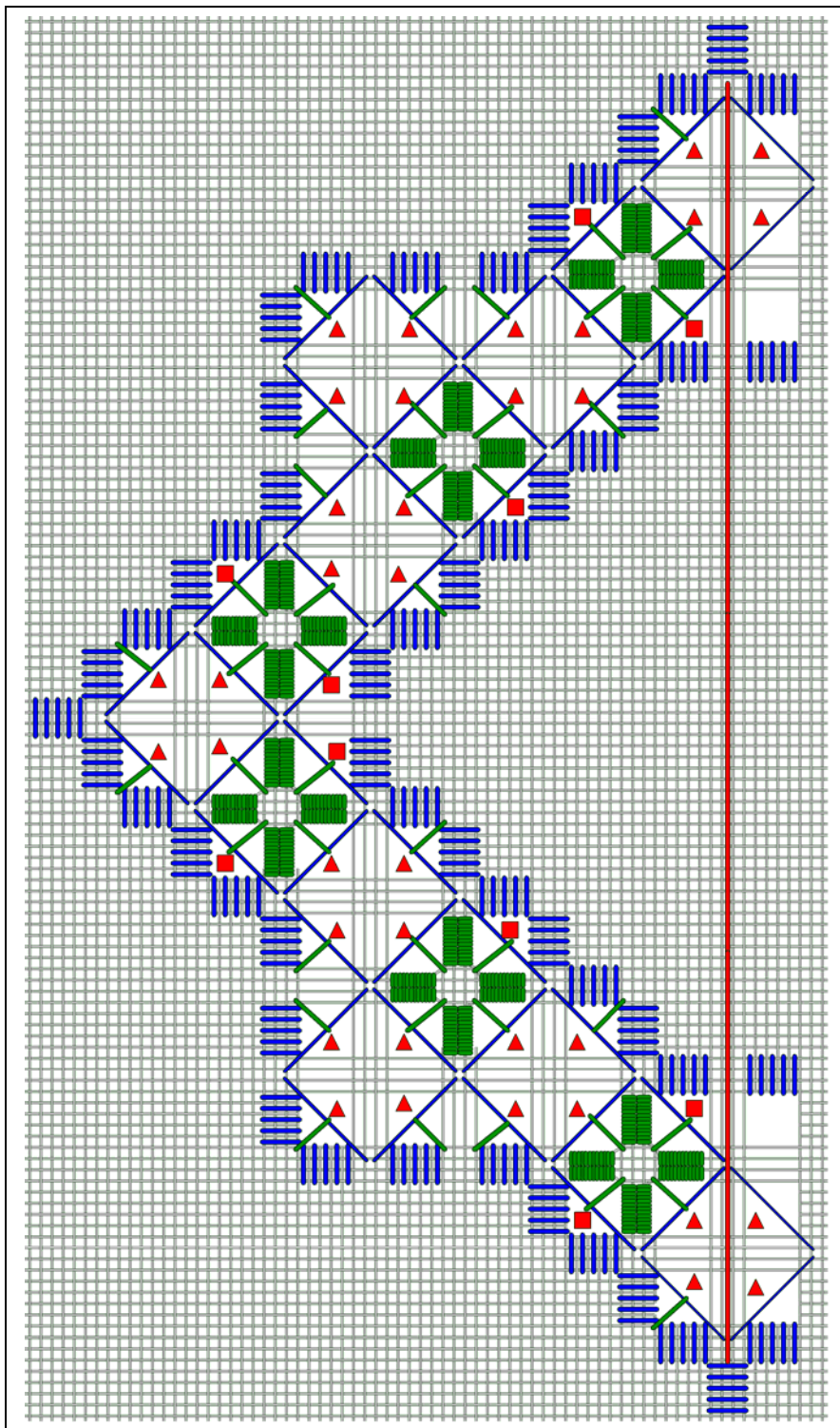
Work around the diamond created by the spokes until you have woven all four sides. There will be unwrapped bars left as you work around the entire design. That's okay! You will go back and weave those bars after you finish all the Kerrie stitches.

Here you can see how one diamond spoke looks after doing the triple woven triangle all the way around the inside center.



As you work around the design, there will be an occasional spot where you will need to add a spoke and do a two-sided weave along the satin stitch edge. See the area indicated by the red squares.





Once you have stitched all the woven triangles, go back and weave the unwrapped bars (shown in green). As you weave those bars, add a short spoke (shown in green) that connects with the woven triangle.

**LEGEND:**

Red Triangles – 3-sided woven triangles

Red Squares – 2-sided woven motifs to compensate for openings near kloster blocks

Green “crosses” – the woven bars done AFTER all of the 2- and 3-sided weaving.

Green lines – the short spokes add as the weaving of bars is done.